



Het Drentse Landschap



CIOBÂRCIU WETLAND

PILOT PROJECT ON ECOLOGICAL RECONSTRUCTION

Eng. Dan Bădărău
Dr. Eng. Anca Savin

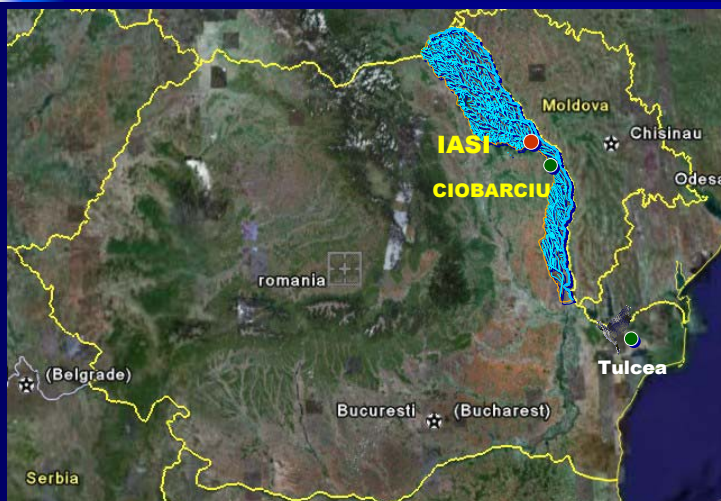
National Administration "Romanian Water"
Prut Directorate – Iași, Romania

Tulcea, 18-20 April 2007

Final Wetlands Workshop of UNDP/GEF Danube Regional Project

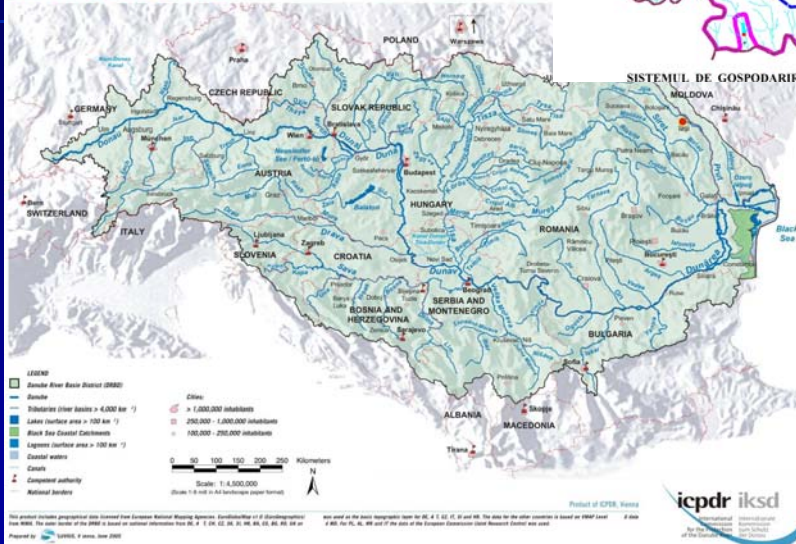
Prut Basin

S = 10 990 km²

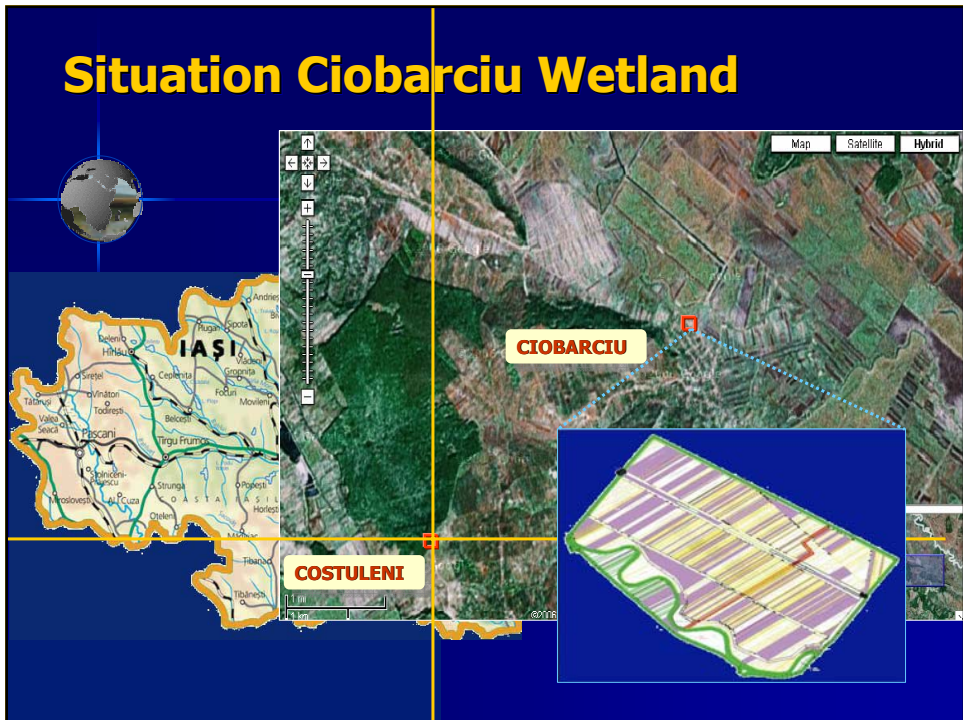


Situation Old Jijia

Danube River Basin District: Overview



Situation Ciobarciu Wetland



WHY choose Ciobarcui?

- area was drastic modify
- economic value is limited
- have a good ecological potential



IASI

JIJIA

R. Jijia

Raul Prut

Jijia Veche

Nod Chiperesti

Poldere Costuleni

COSTULENI

What we do?:

- Restoration flow on Old Jijia
- Restoration Ciobarcui Wetland:
 - both the land
 - design plan
 - project works
 - wetland management

Steps for buy the land

Public Information and Involvement (2001-2003)

Evaluation land (October 2003)

Agreement landowners (2003-2004)

Realization new parcels plan (oct.2004)

Correction property deeds (2005-2006)

Both the land (2005-2006)

P
R
O
B
L
E
M
S



Involved stakeholders

- Information county and locale authority (Iasi County Council and Local Councilors from Costuleni and Prisacani)

- Information and consulted another stakeholders (AN-IF, Environmental Agency, farmers, Universities)

- Information local people (posters, articles, mass-media and meetings)



Involved children in design plan



Evaluation land

- Evaluation price of land in October 2003:

150 Euro/ha (Prisăcani)

170 Euro/ha (Costuleni)

- Decided to pay :

180 Euro/ha

Now is ~ 1000 euro/ha



1 euro = 40.000 lei Rol (4 lei RON)

Forecast rate to change ⇒ 50.000 lei Rol (5 lei RON)

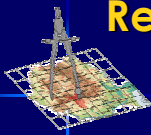
During the both 1 euro was ~ 33.000-35.000 (3.3-3.5)

Agreement landowners

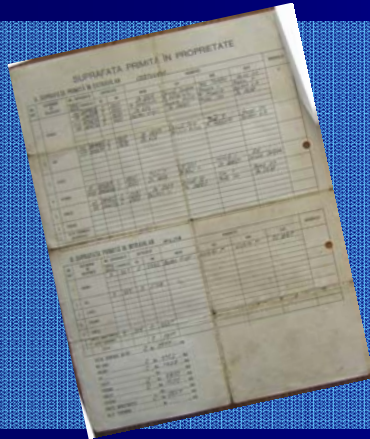
- Landowners List (~450)
- Meeting with local people, presentation design plan in Local Council and schools from Prisecani and Costuleni villages
- Discussion with another stakeholders
- Engagement two persons from every village to help us



Realization new parcel plan



Correction property deeds



Situation both land

Hectares	PRISACANI	COSTULENI	TOTAL
BOTH	125,61	3,61	129,22
LAND RENT	5,52	0	5,52
MAYORALITY	31,02	3,8	34,82
Can't Buy	45,27	8,59	53,86
	207,42	16	223,42



PROBLEMS

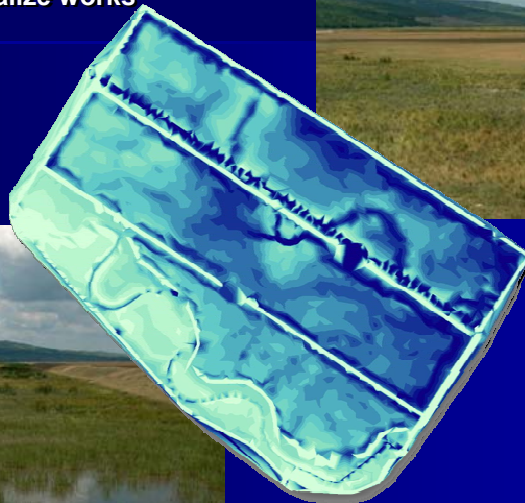


- Difficulty to identify landowners
- Many landowners (380) with small parcel (600 - 3600 sm)
- Absence of parcel plan
- A lot of mistake on property deeds
- Devalorization Euro 2004 – 2006 and increase fast price of land
- Some landowners and successors wasn't in Romania



For design plan we make study about:

- ✦ elevation land
- ✦ possibility to realize works



Elevation Range	
27 - 29.4	Dark Blue
29.4 - 29.6	Blue
29.6 - 29.8	Light Blue
29.8 - 29.9	Very Light Blue
29.9 - 30	Lightest Blue
30 - 30.1	Lightest Cyan
30.1 - 30.2	Light Cyan
30.2 - 30.3	Light Green
30.3 - 30.4	Light Green
30.4 - 30.6	Light Green
30.6 - 30.8	Light Green
30.8 - 31	Light Green
31 - 35	Lightest Green

Design Ciobarciu Wetland



Wetland Management

C R I T E R I O N S

- **flooding wetland in spring and autumn**
- **grazing in same areas for limited extension reed (1 – 2 cows/ha)**
- **activities in wetland:**
 - **cutting the reeds - limited**
 - **hunting - only outside wetland**
 - **recreativ fishing - only extra sesion for reproduction**
 - **limited trafic in wetland in sesion for reproduction**



Management Plan will be a document works.

Now Ciobarciu Wetland is site: CIS - Natura 2000



Conclusions

- Difficult project:
 - many stakeholders and different interests
 - many landowners
 - limited time (3 years) and resources
- But in finally we realize
first wetland from our
"String of pearls" = ecological networks



Thanks you !



Inauguration Ciobarciu Wetland 3 October 2006