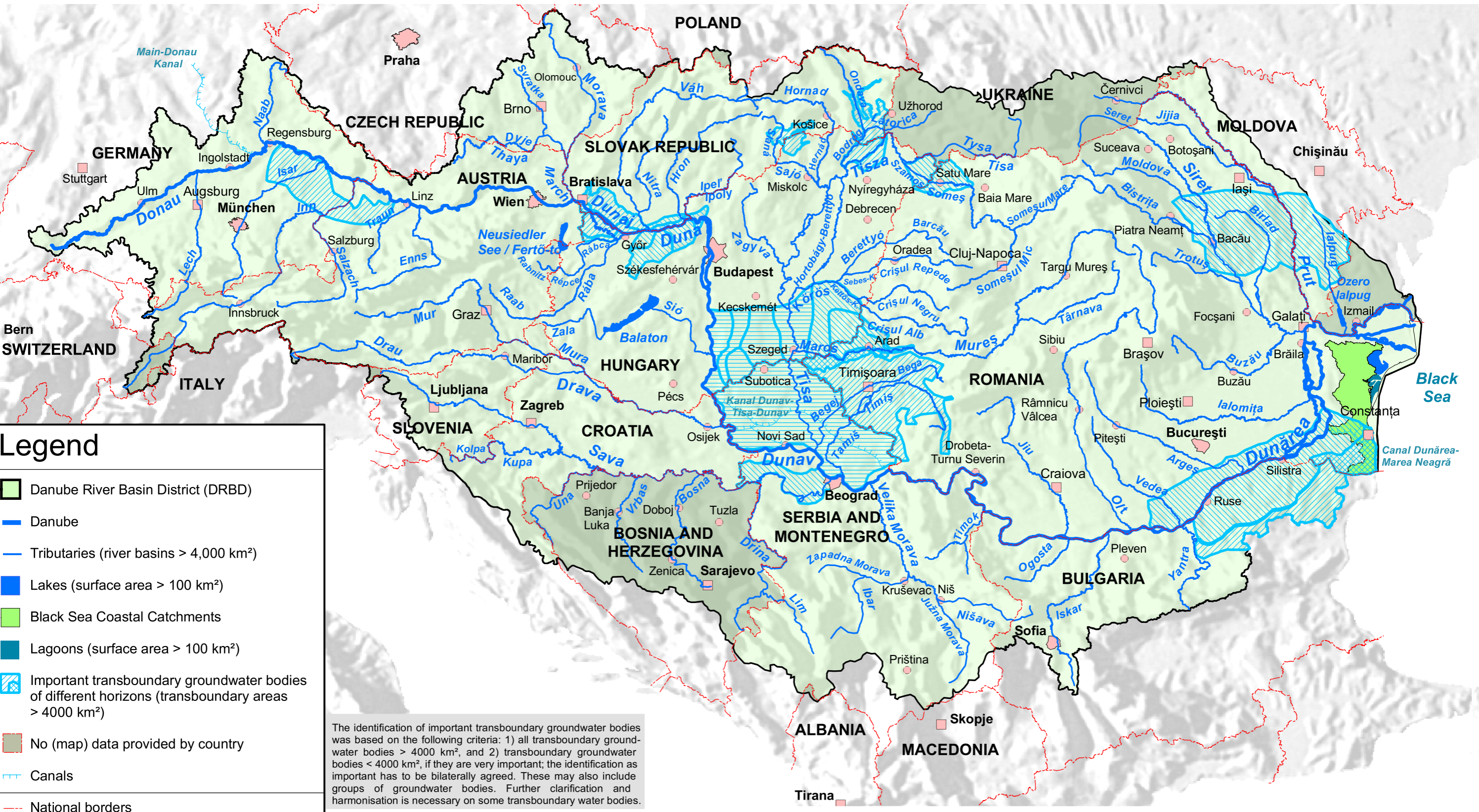


Danube River Basin District

Map 15: Important Transboundary Groundwater Bodies



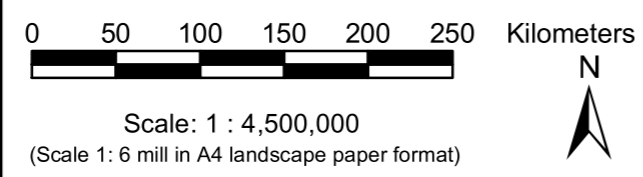
Legend

- Danube River Basin District (DRBD)
- Danube
- Tributaries (river basins > 4,000 km²)
- Lakes (surface area > 100 km²)
- Black Sea Coastal Catchments
- Lagoons (surface area > 100 km²)
- Important transboundary groundwater bodies of different horizons (transboundary areas > 4000 km²)
- No (map) data provided by country
- Canals
- National borders

Cities:

- > 1,000,000 inhabitants
- 250,000 - 1,000,000 inhabitants
- 100,000 - 250,000 inhabitants

The identification of important transboundary groundwater bodies was based on the following criteria: 1) all transboundary groundwater bodies > 4000 km², and 2) transboundary groundwater bodies < 4000 km², if they are very important; the identification as important has to be bilaterally agreed. These may also include groups of groundwater bodies. Further clarification and harmonisation is necessary on some transboundary water bodies.



This product includes geographical data licensed from European National Mapping Agencies. EuroGlobalMap v1.0 (EuroGeographics) was used as the basic topographic layer for DE, AT, CZ, IT, SI and HR. The data for the other countries is based on VMAP Level 0 data from NIMA. The outer border of the DRBD is based on national information from DE, AT, CH, CZ, SK, SI, HR, BA, CS, BG, RO, UA and MD. For PL, AL, MK and IT the data of the European Commission (Joint Research Centre) was used.