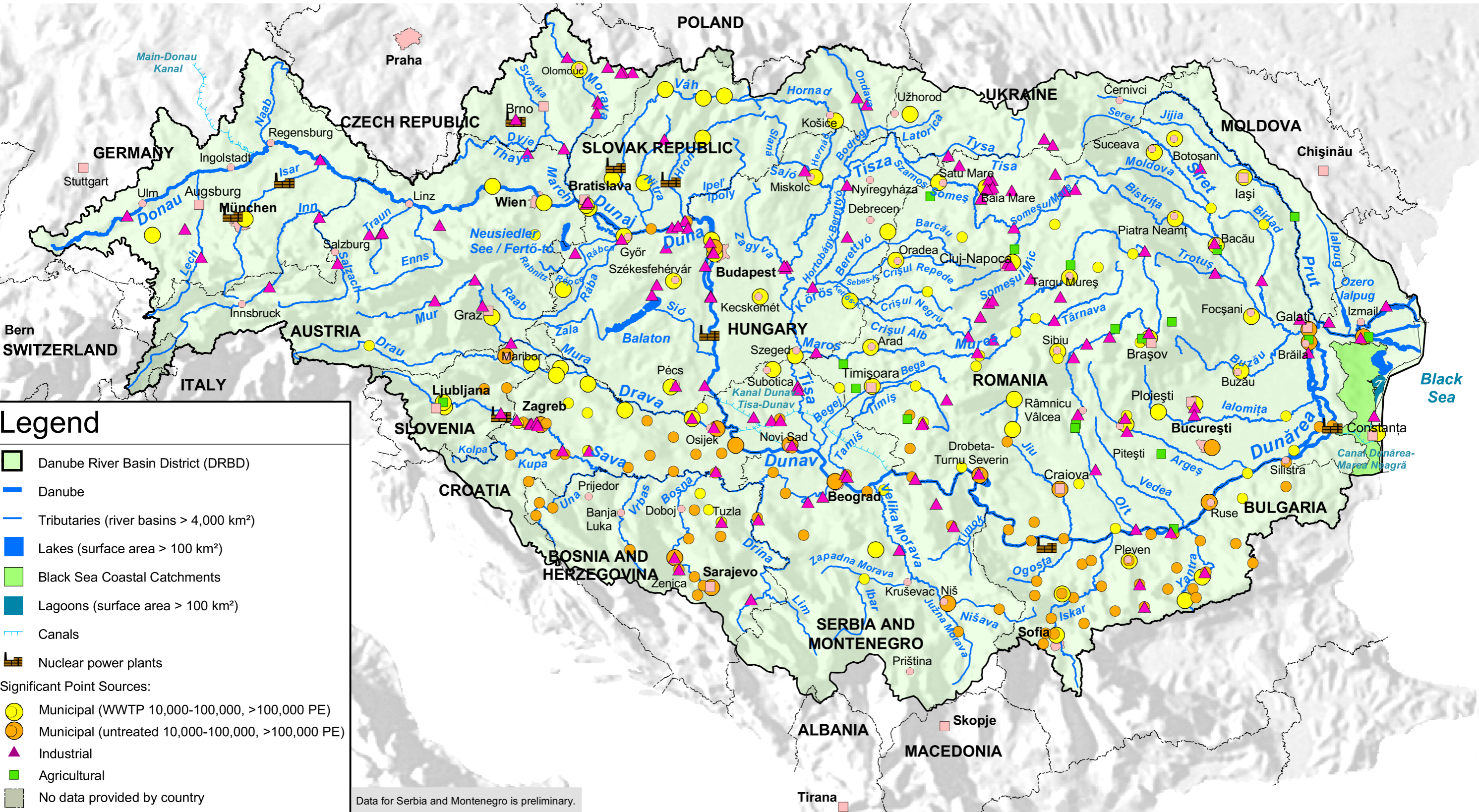


Danube River Basin District

Map 5: Significant Point Sources of Pollution



Legend

- Danube River Basin District (DRBD)
- Danube
- Tributaries (river basins > 4,000 km²)
- Lakes (surface area > 100 km²)
- Black Sea Coastal Catchments
- Lagoons (surface area > 100 km²)
- Canals
- Nuclear power plants

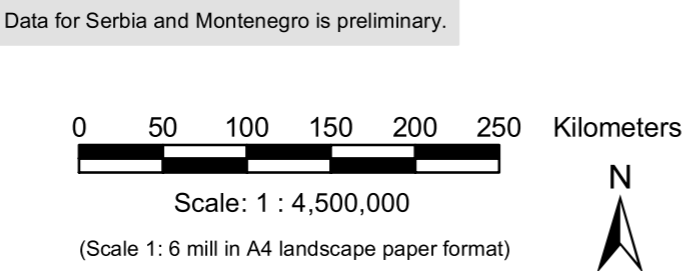
Significant Point Sources:

- Municipal (WWTP 10,000-100,000, >100,000 PE)
- Municipal (untreated 10,000-100,000, >100,000 PE)
- Industrial
- Agricultural
- No data provided by country

--- National borders

Cities:

- > 1,000,000 inhabitants
- 250,000 - 1,000,000 inhabitants
- 100,000 - 250,000 inhabitants



This product includes geographical data licensed from European National Mapping Agencies. EuroGlobalMap v1.0 (EuroGeographics) was used as the basic topographic layer for DE, AT, CZ, IT, SI and HR. The data for the other countries is based on VMAP Level 0 data from NIMA. The outer border of the DRBD is based on national information from DE, AT, CH, CZ, SK, SI, HR, BA, CS, BG, RO, UA and MD. For PL, AL, MK and IT the data of the European Commission (Joint Research Centre) was used.