

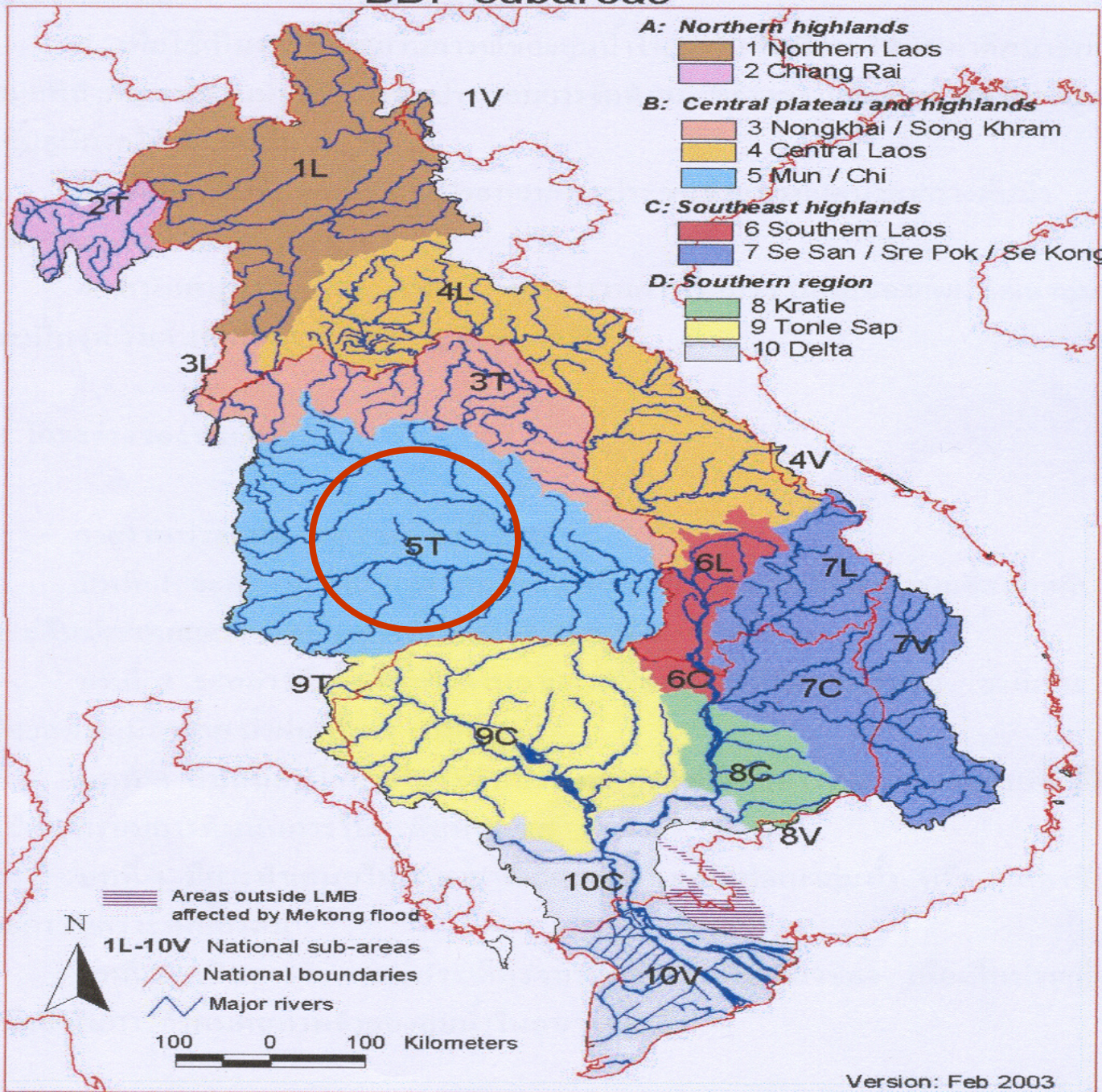


**Lesson Learn from Thailand.  
“Huai Sam Mo” BDP Watershed  
Management on 5T Sub  
Basin.**

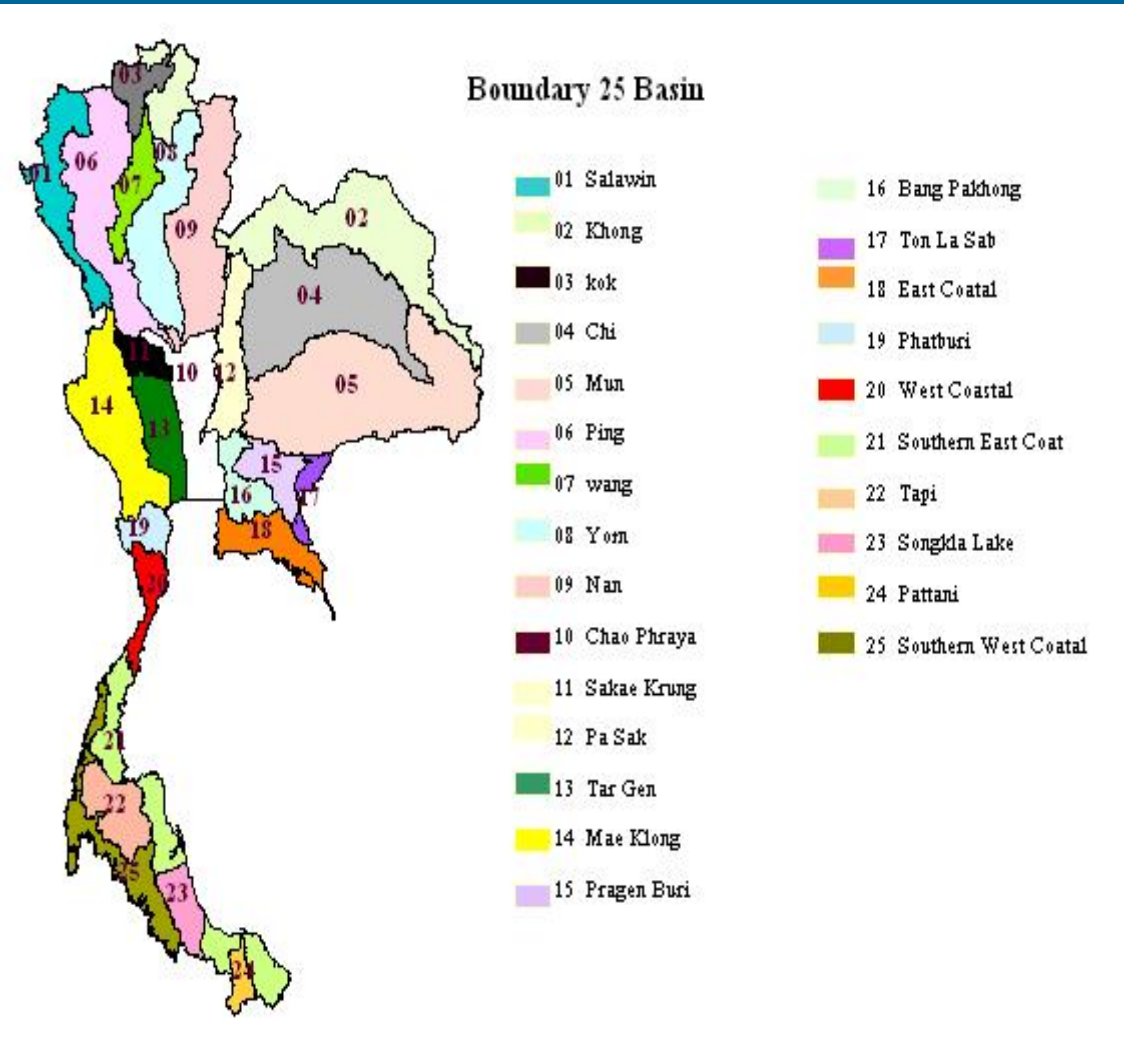
**July 2006 – March 2008**

**Mr.Prasit Warnset.  
5T Working Group.**

# BDP subareas



# 25 Basin in Thailand.



## 5 T Region Mae Kong Sub Basin

- **LOCATION** : Chi and Mun river basin in Northeast of Thailand
- **AREA** : 120,377 km<sup>2</sup>
- **TOPOGRAPHY** : Korat Plateau , land lock
- **POPULATION** : 10.73 million people ( in 2003 )  
Annual income 24,745 Baht / person
- **MAJOR CROPS** : Rice , Field crop ( sugarcane , cassava , maize and legumes )
- **LIVESTOCKS** : Cattle , chickens
- **FISHERIES** : In natural water resources

## Team Works.

**5T Working Group : from Mun & Chi sub - committee  
August 2004**

- **Working Groups : 4 Specific working groups :**
  - HSM Working Group : local leader, NGO, and DWR Region 4. August, 2007
  - HSM Working Group Network : upper, middle, and lower area. July 2006
  - HSM Woman Network. April 2007
  - HSM Youth Network. May 2007



# Process & Mechanism for Basin planning.

## BDP Phase1

- Process 1. Sub – area Study and Analysis.
- Process 2. Scenario.
- Process 3. Strategies.
- Process 4. Long – list of Programmes.
- Process 5. Short – list of Programmes.



### **Capacity Building**

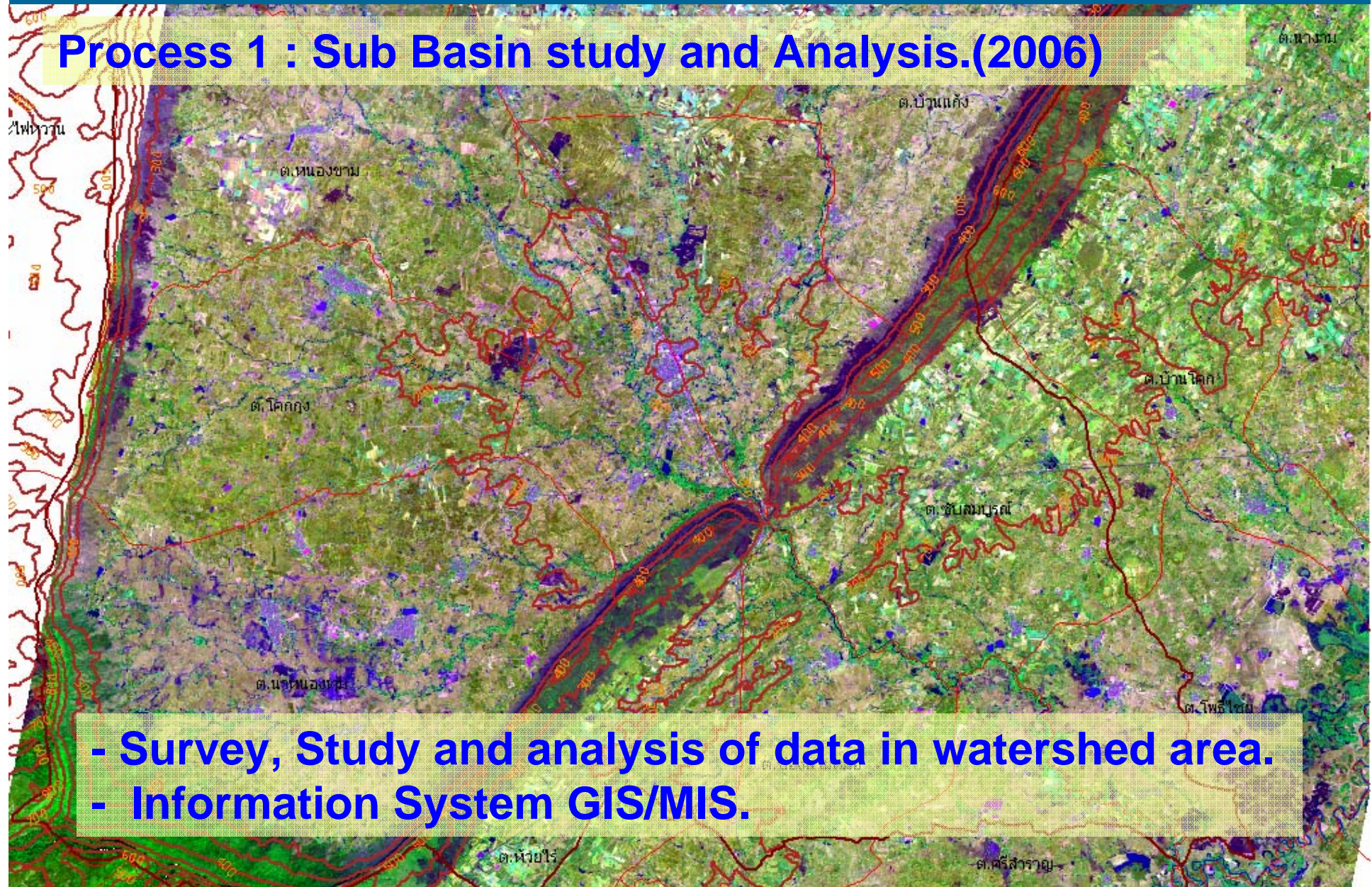
- RBO, WG.
- Stakeholder

### **Knowledge Sharing**

- Draft of water Law
- IWRM
- Transboundary issue
- etc.

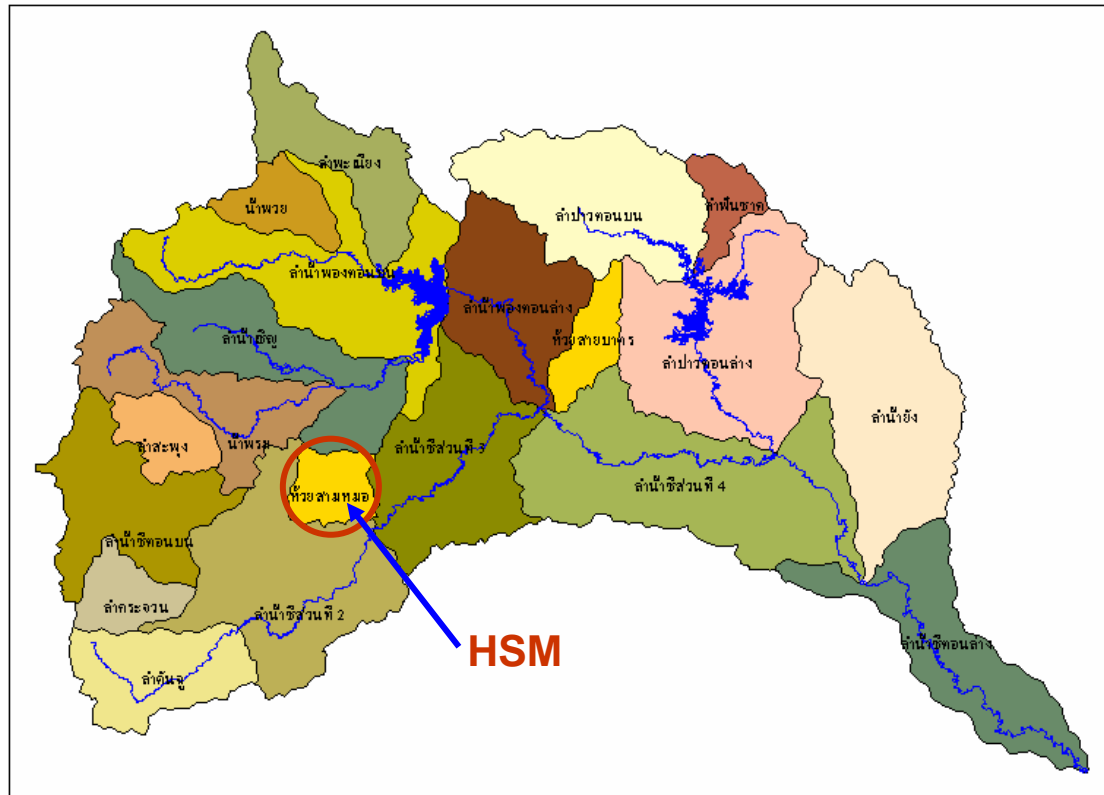
# “Huai Sam Mo” Basin Plan

## Process 1 : Sub Basin study and Analysis.(2006)



- Survey, Study and analysis of data in watershed area.
- Information System GIS/MIS.

# Information for HSM.



HSM : 1 OF 20 SUB-BASIN

OF CHI

BASIN.

(TOPOGRAPHY/ :

729 KM<sup>2</sup> OR 455,825

RAIS WATERSHED AREA

GEOGRAPHY) :

2 PROVINCES.

4 DISTRICTS.

16 SUB-DISTRICTS.

POPULATION:

59,972 People, 12,139



# LAND RESOURCES AND UTILIZING

- 1 of 20 SUB BASIN IN CHI BASIN
- 729 km<sup>2</sup> OR 455,825 Rais FOR WATERSHED AREA.  
FOR AGRICULTURAL, 318,718 RAIS. (69.96%)
- 27,182 Rais FOR IRRIGATION AREA (8.53%)
- 291,536 Rais FOR NON IRRIGATION AREA (91.17 %)
- 94,831 Rais FOR FOREST AREA (20.81%)
- 40,718 Rais FOR COMMUNITY AREAS & ACT.  
(8.93%)
- 1,358 Rais FOR RESERVIOR AREA (0.30%)

## HYDROLOGY

: 1,110 mm MEAN RAINFALL

: 27.1 C MEAN TEMPERATURE

: 69 % MONTHLY MEAN HUMIDITY

: 140 mcm<sup>3</sup> WATER RUN OFF

## WATER USE : PER YEAR.

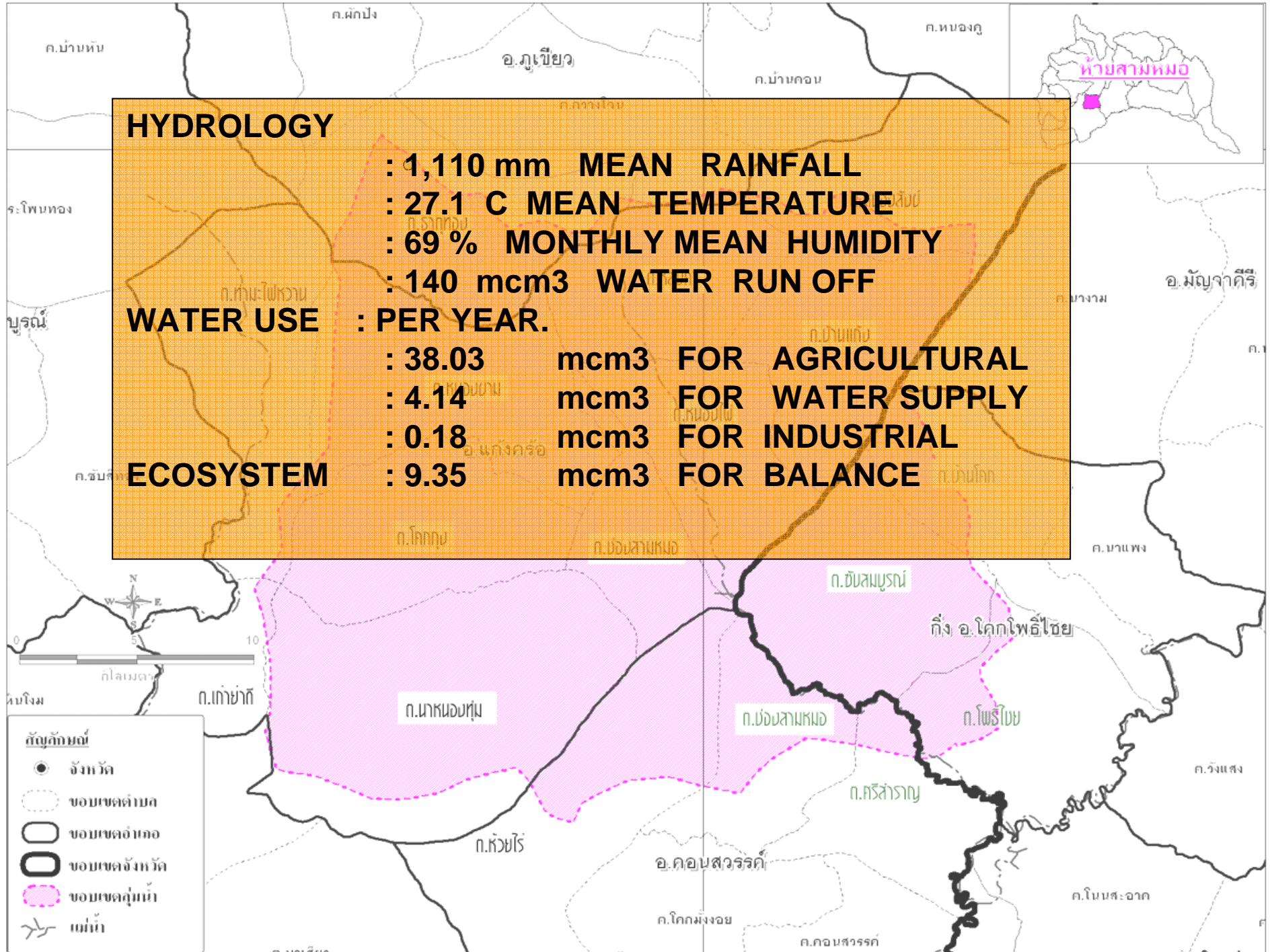
: 38.03 mcm<sup>3</sup> FOR AGRICULTURAL

: 4.14 mcm<sup>3</sup> FOR WATER SUPPLY

: 0.18 mcm<sup>3</sup> FOR INDUSTRIAL

## ECOSYSTEM : 9.35 mcm<sup>3</sup> FOR BALANCE

ห้วยสามหมอก



## Process 2 : Scenario

- Study from The past understand for present and Look forward for future.
- Vision “ Huai Sam Mo has strong local organization for sustainable management of water resource and revitalization of natural fertility using local wisdom and government ”



## Process 3 : Strategy

### 5 Strategy plan for HSM :

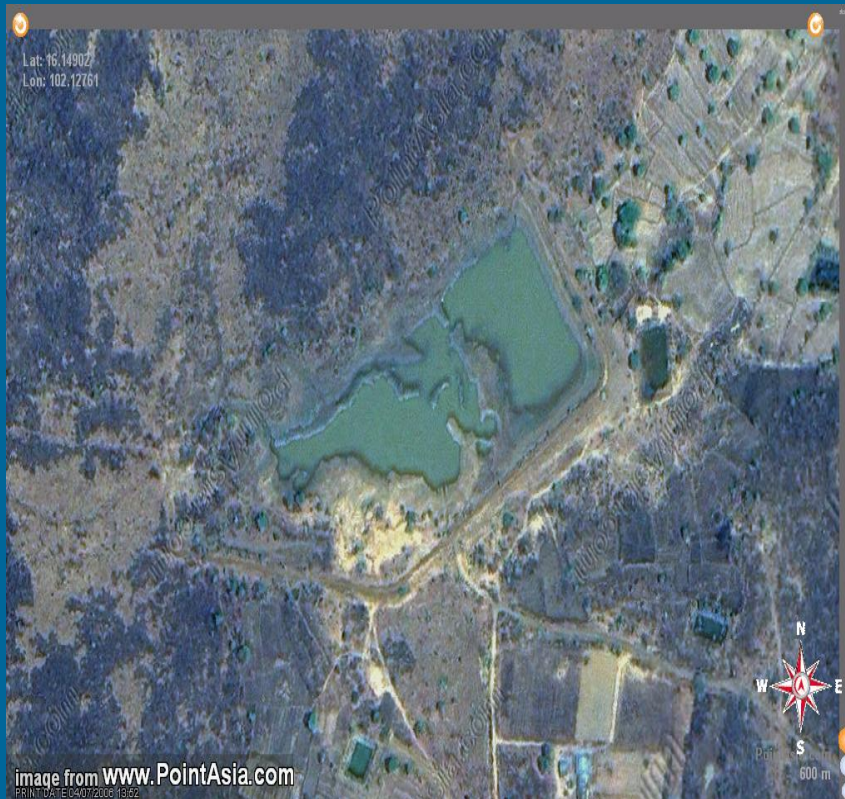
- Community water resource.
- Organic farming / career and income.
- Strengthen capacity of RBC
- Local curriculum knowledge and community order.
- Woman and Youth Network.



## Process 4 : Long – list of programs and project future ( on going ).

### Community water resource :

- reservoir network. – water supply
- underground dam. – zoning area – ect.



อ่างจุดโง้ง



อ่างหินลับมิด

- **Organic farming / Career and income.**

- Organic fertilize networks.

- Organic vegetation.

- Organic rice.

- Fisheries Organic.

(Organic promotion. /Support by Small Grant of WB )



- **Strengthen capacity of RBC.**

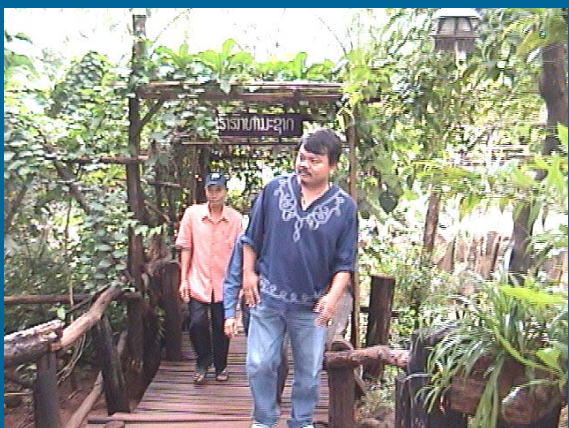
- Established “Foundation for working group & networks activities :
- To raise young local plants : on going
- Training & Meeting, workshop, study tours for WGS Network : on going
- Public relation



# STUDY TOUR ON SUB-AREA 6L







- **Local curriculum knowledge and community order.**
  - Established Learning Center : ( Station & Mobile ).
  - Local curriculum knowledge : already.  
& University curriculum : on going.
  - Local wisdom knowledge & community plan : already.
  - Activities



- **Woman – Young Network.**

- Set up the women network on 24 April 2007.

- Set up the youth network on 26 May 2007.

- ( Promote the networks for strength power of IWRM. )



# Mobile Learning : by Public Relation

- Awareness
- Community

25 Feb 2008



26 Feb 2008



27 Feb 2008



28 Feb 2008



4 Much 2008





5 Much 2008



6 Much 2008

The End.

THANK YOU FOR ATTENTION.

