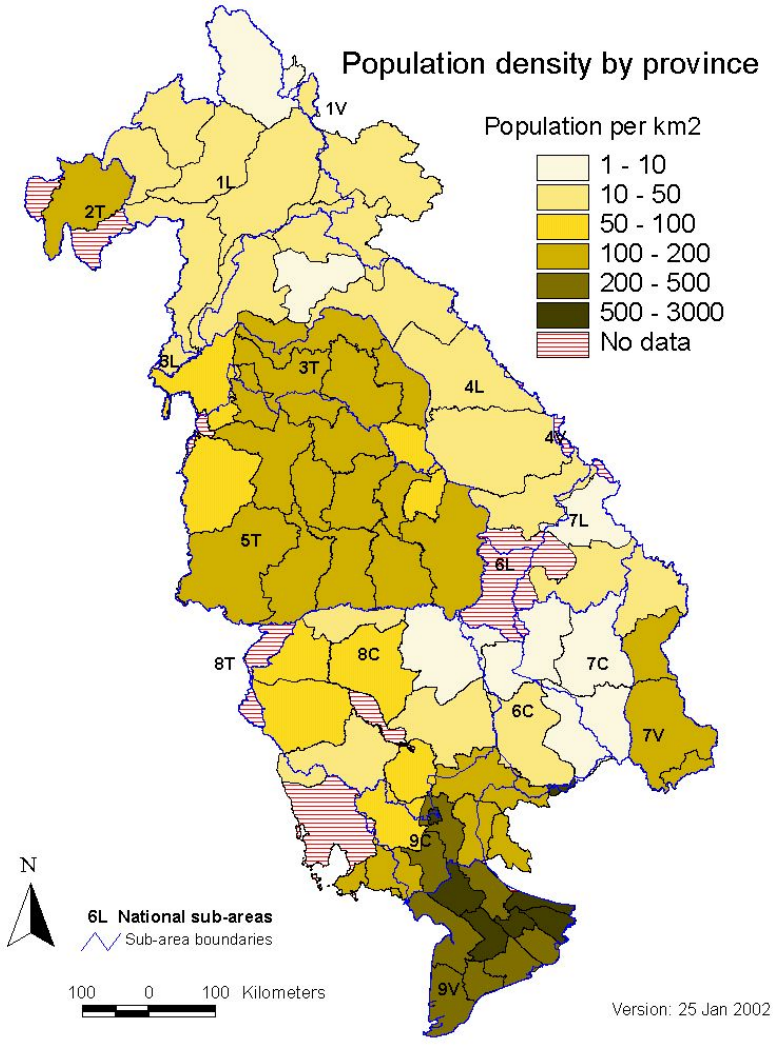
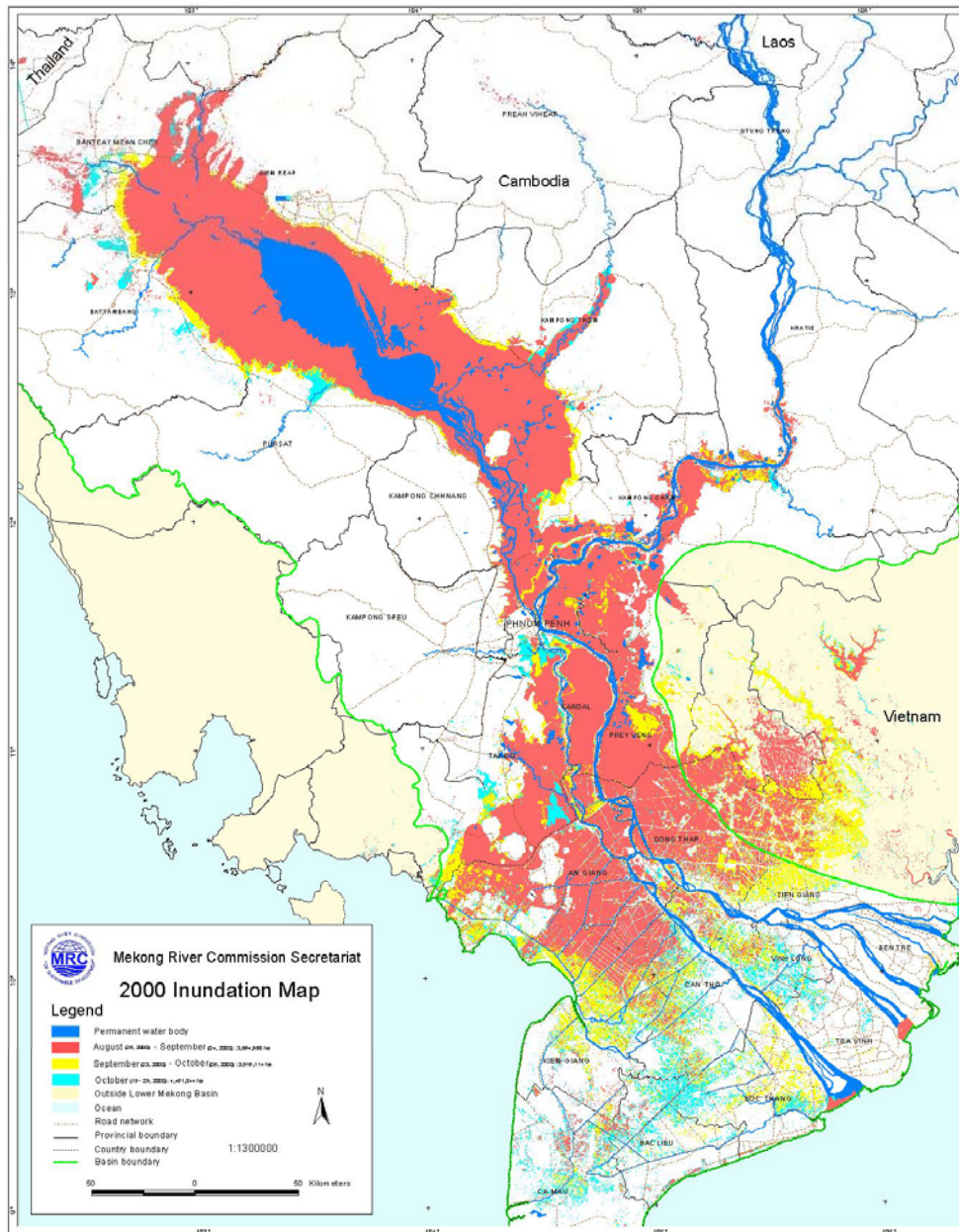


Implementation of  
the Land Management Component  
of MRC's  
Flood Management and Mitigation Program

# Population density by province





Map compiled based on the digital interpretation of RADARSAT images acquired in dry season March 16 - 26, 1999 and in the rainy season from August to October 2000 with extensive field checking

Prepared by Mekong River Commission Secretariat  
 Phnom Penh, Cambodia, 2000

Projection: Transverse Mercator, zone 48  
 Spheroid: Everest  
 Horizontal datum: Indian Datum 1960

## Outputs and main activities of the Land Management Component

Make more reliable flood information available.

Collect & document information on current practices of riparian land management.

Acquire or generate topographic data sets and produce flood probability maps.

Establish open access database with information for riparian land management.

Strengthen the capacity to prepare and implement improved land use plans.

Produce guidelines and training modules on using flood probability information.

Provide training and conduct ToT-courses on using flood probability information.

Facilitate regional sharing of knowledge on improved land management in floodplains.

Establish contacts with organizations involved in riparian land management.

Facilitate the establishment of a regional network on riparian land management.

Produce documentation with recommendations for riparian land management.

## LMC workplan for the current phase: output 1

	2004		2005				2006				2007			
	3	4	1	2	3	4	1	2	3	4	1	2	3	
Output 1: More reliable flood probability information is provided for land information systems in selected provinces and districts.														
1.1 Collect and document information on current practices of riparian land management in the lower Mekong area.			████████████████████											
1.2 Organise two national workshops to discuss current practices of riparian land management and ways to improve them.					2 xW									
1.3 Organise a sub-regional technical workshop to identify the current status of the vertical geodetic networks and topographic data.						W								
1.4 Conduct a topographic survey in selected areas of the Cambodian floodplains.						████████████████████								
1.5 Acquire topographic data sets for selected areas of the Vietnamese floodplains.			████████████████████											
1.6 Compile flood probability data sets and maps at a scale detailed enough for land use planning purposes.						↓	████████████████████							
						↓	████████████████████							
1.7 Establish an open access database with flood probability data for land use planning and physical mitigation planning.										████████████████████				
												▨▨▨▨▨▨▨▨▨▨		

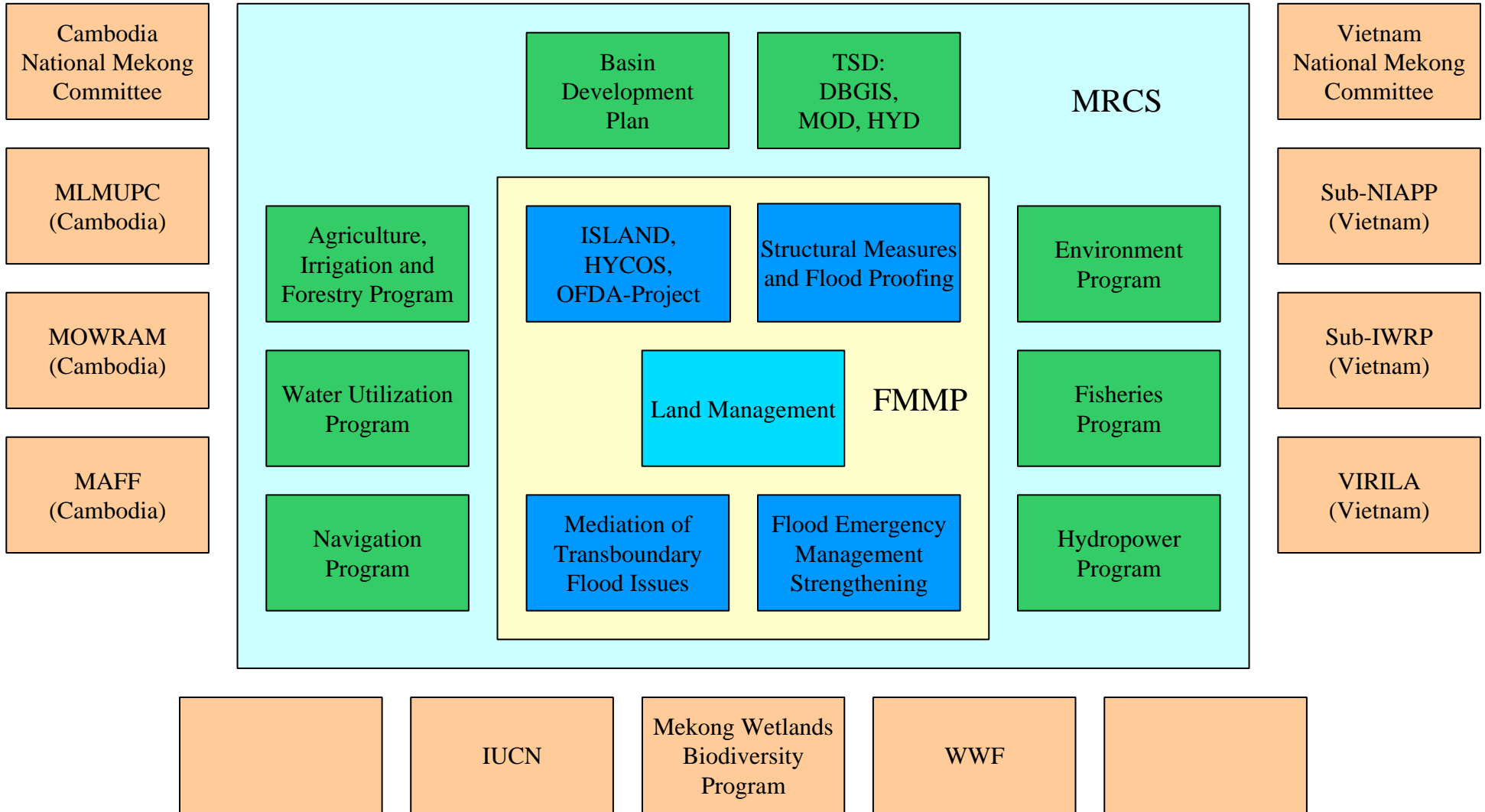
## LMC workplan for the current phase: output 2

	2004		2005				2006				2007		
	3	4	1	2	3	4	1	2	3	4	1	2	3
<b>Output 2: The capacity of relevant line agencies in selected provinces and districts to prepare and implement improved land use plans is strengthened.</b>													
2.1 Organise a regional workshop to select cooperating and implementing partners and to discuss their requirements for support from the component with them.				W									
2.2 In cooperation with partner line agencies produce guidelines and training modules on the topic of using flood probability information in land use planning.													
2.3 Conduct training for line agency staff in selected provinces and districts on using flood probability information in land use planning and in producing integrated flood hazard plans.													
2.4 Provide training of trainer courses for national programs and emergency services on using flood probability information in land use planning and in producing integrated flood hazard plans.													
2.5 Organise a regional workshop to disseminate the experiences gained from the capacity building process further.													W

## LMC workplan for the current phase: output 3

	2004		2005				2006				2007		
	3	4	1	2	3	4	1	2	3	4	1	2	3
<b>Output 3: Regional sharing of knowledge on improved land management in floodplains is facilitated.</b>													
3.1 Establish contacts with governmental and non-governmental organisations as well as other actors involved in riparian land management.				[Hatched bar from 2005 Q1 to 2006 Q3]									
3.2 Organise a regional workshop to facilitate discussions and information exchange among organisations interested in issues of riparian land management.				W									
3.3 Support and facilitate the establishment of a network on riparian land management in the lower Mekong area.				[Hatched bar from 2005 Q2 to 2006 Q4]									
3.4 Produce a comparative documentation with examples of and recommendations for improved riparian land management.							[Solid bar from 2006 Q1 to 2007 Q3]						
3.5 Organise a regional workshop to share experiences of using flood probability information in riparian land management.													W

# Current Organizational Environment of the Land Management Component





Address: Georg Käsler  
Chief Technical Adviser  
FMMP - Land Management Component  
Mekong River Commission  
P.O. Box 3802  
Vientiane 01000

Email: [kaesler@mrcmekong.org](mailto:kaesler@mrcmekong.org)

Phone: +856 21 263263 ext. 4606

Thank you very much.