

COMMUNITY ECONOMIC DEVELOPMENT (CED)

Topic: “ Some local approaches in
Economic Impact Assessment ”.

Presented by: Mr. Keo Tai,

Programs Coordinator of NRM and Livelihoods

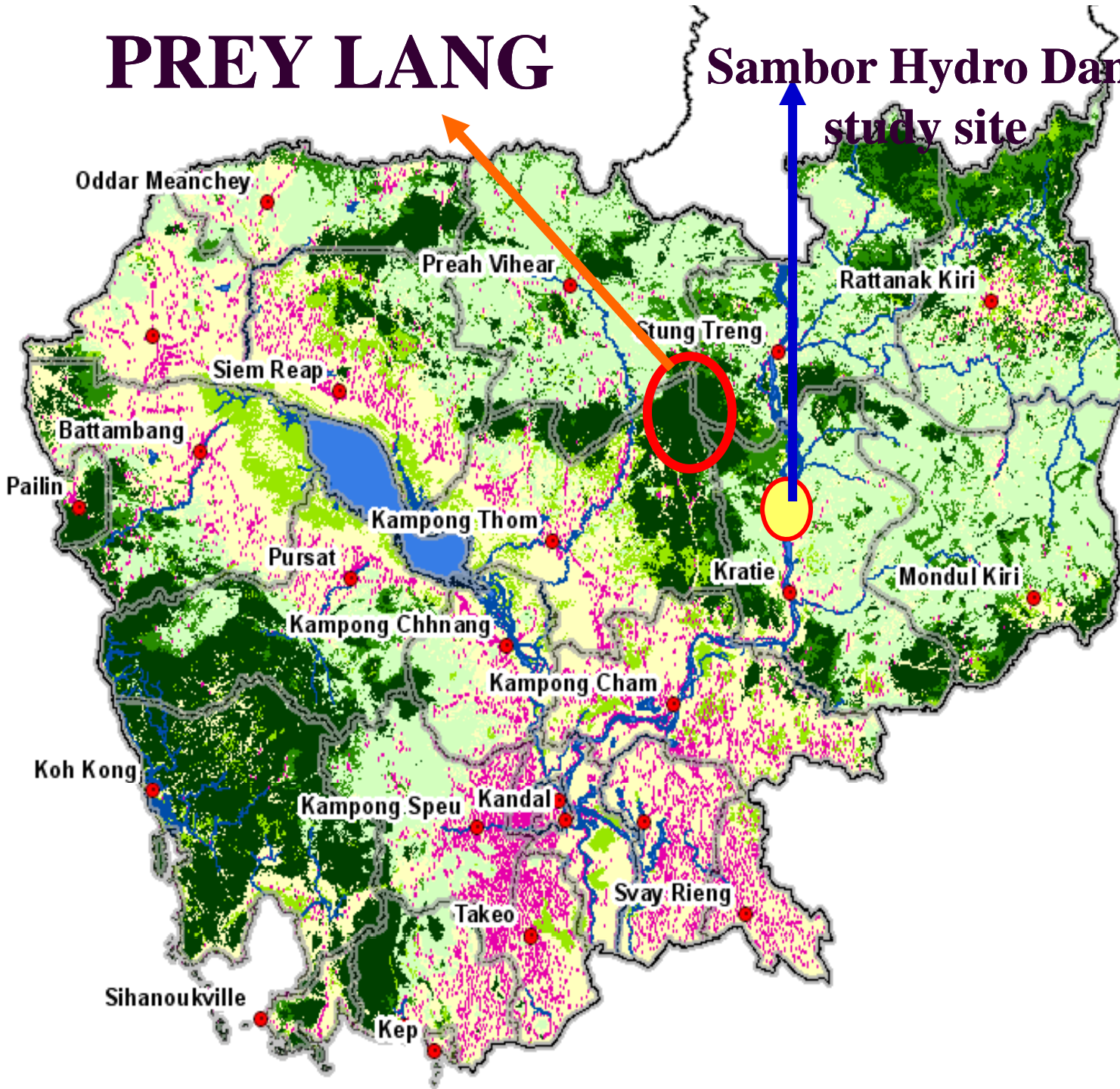
In Kratie & Stung Treng Provinces, Cambodia

Objective of Presentation:

“ To share the situation and current practical approaches of CED ‘s target areas of Economic Impact Assessment in wetlands-upstream of Mekong in Cambodia ”.

PREY LANG

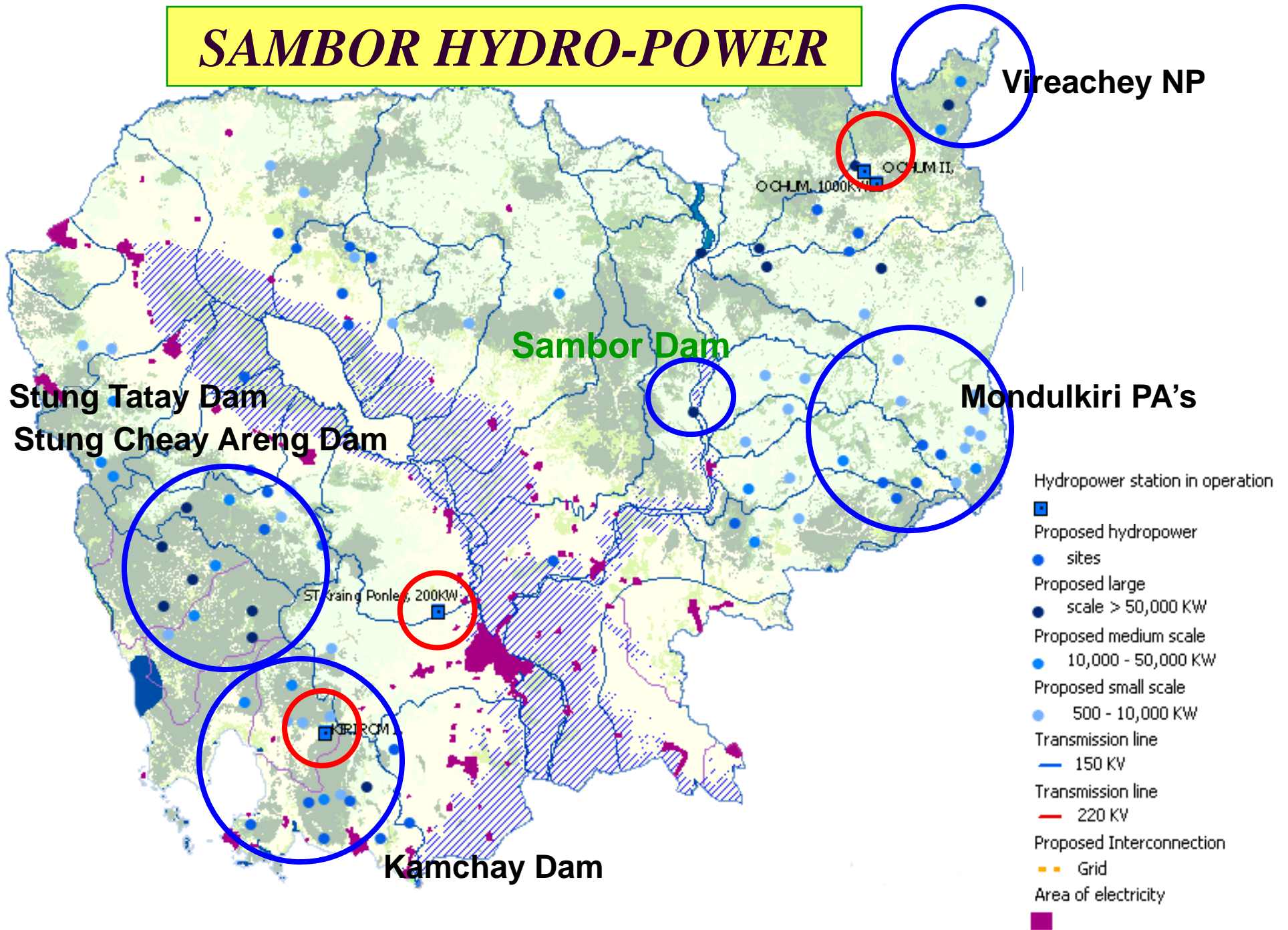
Sambor Hydro Dam
study site



Legend

- Evergreen forest
- Semi-evergreen forest
- Deciduous forest
- Other forest
- Non forest
- Village centres
- Provincial centres

SAMBOR HYDRO-POWER



Sambor Hydro Dam Study Site

■ **-Location** : Mekong mainstream, Prek Kampi, south of Sambor village, Kratie Province; 30km wide, 35 meters high dam which would flood more than 800 square kilometers (sq. km)

■ **- Power** : To generate 3,300 MW to be sold to Thailand and/or Vietnam

■ **- Population** : The MRC states that it is a dam with "minor impacts" and estimates that 5,120 people would be displaced by the dam's reservoir, based on a 1969 survey. However, local sources say it would be flooded by the dam is today over 60,000 people, including ethnic communities.

■ **- Species** : The area still contains extensive forests, habitat for wildlife including hornbills, eagles, deer and tigers, although bears and elephants are disappearing from the area

■ **- Sambor** provides an important habitat for many of Cambodia's 200 species of fish, and the dolphins and crocodiles are still regularly sighted by villagers in the area.

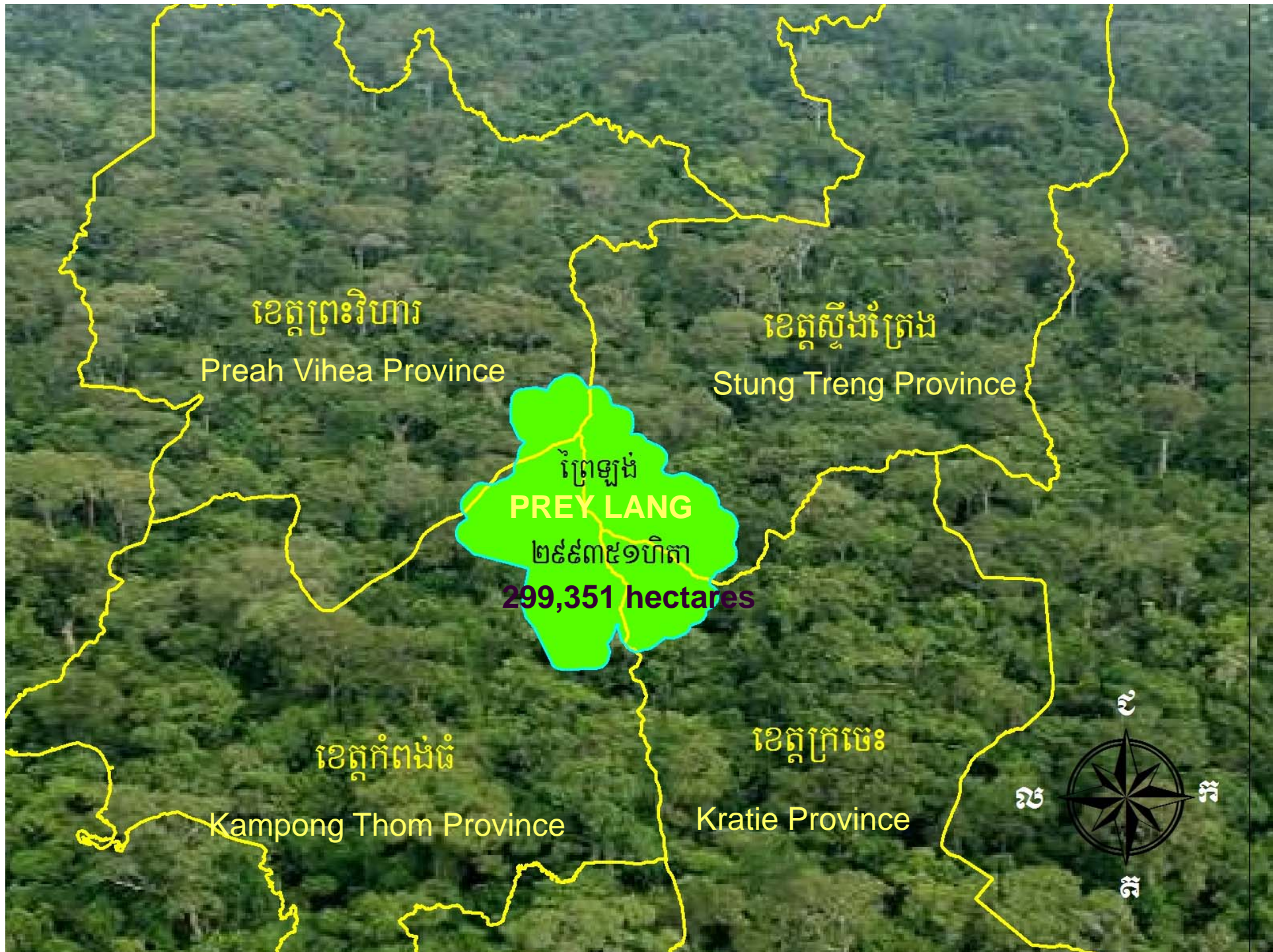
An aerial photograph of a vast, dense green forest, likely a lowland dry evergreen forest. The forest extends to the horizon under a clear sky. The text is overlaid on the image.

PREY LANG

**LAST REMAINING LOWLAND DRY
EVERGREEN FOREST**

Shared border with :

**Four Provinces of Cambodia = 6 districts = 12 commune
= approx 50 villages**



ខេត្តព្រះវិហារ
Preah Vihea Province

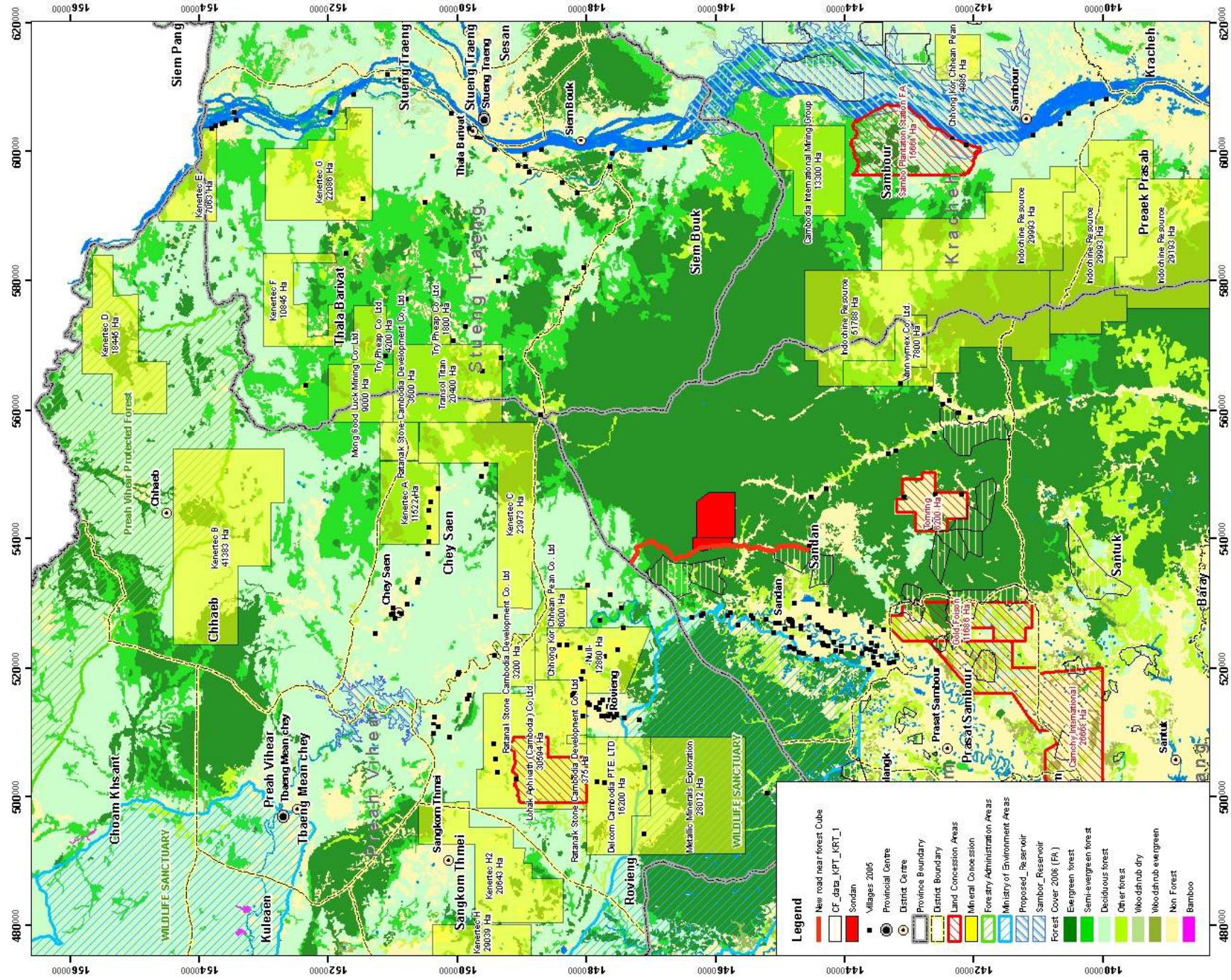
ខេត្តស្ទឹងត្រែង
Stung Treng Province

ខេត្តកំពង់ធំ
Kampong Thom Province

ខេត្តក្រចេះ
Kratie Province

ព្រៃឡង់
PREY LANG
២៩៩៣៥១ហិកតា
299,351 hectares





Legend

- New road near forest Cube
- CF_data_KPT_KRT_1
- Sandan
- Villages 2005
- Provincial Centre
- District Centre
- Province Boundary
- District Boundary
- Land Concession Areas
- Mineral Concession
- Forestry Administration Areas
- Ministry of Environment Areas
- Proposed_Reservoir
- Sambor_Reservoir
- Forest Cover 2006 (FA)
- Evergreen forest
- Semi-evergreen forest
- Deciduous forest
- Other forest
- Wido dshub dry
- Wido dshub ewe green
- Non Forest
- Bamboo

Prey Lang Atlas



PREY LANG SOLUTION

COMMUNITY MANAGED CONSERVATION CONCESSION

- 1- Advocacy for community voice for co-management rights**
- 2- Acquire protection status or by-in from Gov through public private partnership**
- 3- Concession Development**
 - **Functioning skilled management committee**
 - **Trust Fund mechanisms**
 - **Local sustainable exploitation, with community participation**
 - **Payments for Ecological Services (PES) – through REDD, watershed protection etc.**

ALTERNATIV DEVELOPMENT OF PREY LANG

www.mouthtosource.net/rivers/preylang

- **Plan to mitigate environmental and social impacts**
- **Exploit resources sustainably**
- **Smaller scale local production**
 - Local food,
 - local energy
- **Market chain development for increased ownership**
- **Payments for Ecological Services**
- **Climate change issues**
 - CDM and REDD Solutions
 - Sustainable living alternatives
- **Improved education and information**

Tools that the four communes of communities which share border between Prey Lang and Sambor Hydro Dam study site Area in upstream of Mekong in Cambodia use to assess their current potential local natural resources on Social-Economics Purpose.

- 1- Siem Bok Commune
- 2- Beung Char commune
- 3- Watnanak commune
- 4- Kampong Cham Commune

Wetlands Resources Management and Value-chain Analysis

- 1- Monitor and document their Mekong Wetlands Resources through their Action Researches such as Mekong Fish Pool conservation, Fish documentation...etc.
- 2- Fish Product Value-chain Analysis and small enterprise Development with sustainable uses of the resources.
- 3- Non-Timber Forest Product(NTFP) Value-chain Analysis with sustainable uses of the Prey Lang and their flooded forest resources with their local resources Management Plan.

Any Question or Comment on :

