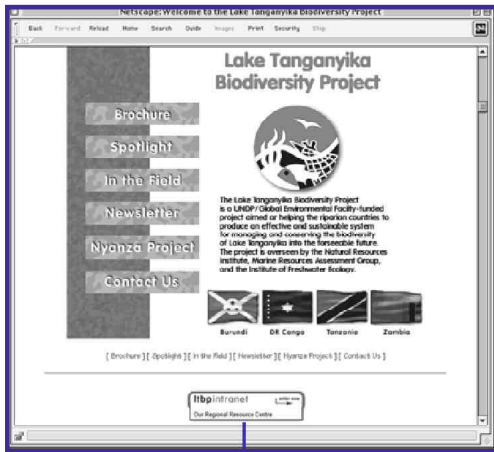




Your Regional Resource Center — Introducing LTBP’s Intranet Website

by Jerod Clabaugh

As many of you know, LTBP has no single ‘base’ of operations, but rather many bases including: the Project Coordinator’s office in Dar es Salaam, the Scientific Liaison Officer’s Office in Bujumbura, the Kigoma and Mpulungu Stations, the National Coordinators’ Offices in Bujumbura, Dar es Salaam, Kinshasa and Lusaka, plus the offices of Natural Resources Institute (NRI), Marine Resources Assessment Group (MRAG) and the Institute of Freshwater Ecology (IFE), and UNOPS and GEF headquarters in the USA. With so many different affiliates spread throughout the region and across the globe, it is very difficult to ensure that all project information is readily available at all places and to all participants.



«Click» on this banner to enter our private section

depth information and data on each Special Study or our Geographical Information System, keep in touch with the Strategic Action Program, download forms and other files crucial for project administration, find out the current location of consultants in the region or just peruse our expanding photo gallery of project events. Whether in the UK or Mpulungu, all project information is at your fingertips.

Jerod Clabaugh served as Technical Officer with LTBP for 16 months and continues to update the website and publish the newsletter.

Over the past two years, LTBP has been investigating solutions to tackle this problem. We chose Internet technology to develop a ‘regional resource center’, where all project information is gathered, archived, and made available to potential users. In January 1999, we unveiled our globally-accessible intranet website. And for those participants without direct access to the Internet, we are providing a complete portable copy of the website on CD-ROM, updated every 3 months.

Although this website is currently based in the UK at NRI, plans are already underway for its deployment to the region later this year. In the coming months, a regional participant will be trained to oversee the development and maintenance of the website into the future.

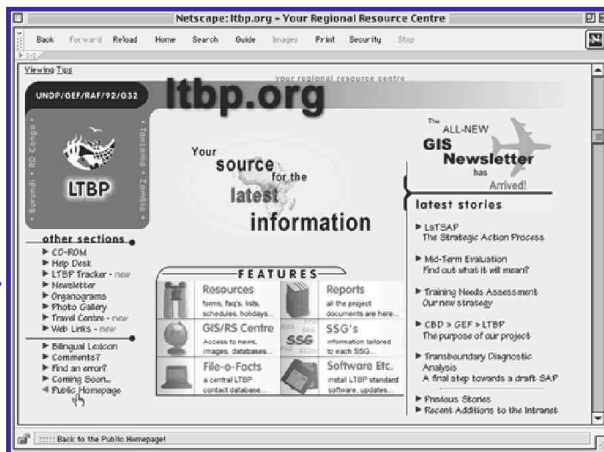
Our website is divided into two sections. The public section allows anyone in the world to learn more about Lake Tanganyika and LTBP’s efforts to protect its biodiversity. Visitors accessing the public section can even, through pictures, visit our riparian field stations. In the private section, LTBP affiliates can find out the latest project news, read or print any project document (even this newsletter), view in-

How to Connect..

For those with access to the Internet, you can begin by going directly to our homepage at <http://www.ltbp.org>

The private section can be accessed by clicking on the logo (above left) at the bottom of the homepage. Access may be requested from lakeside@cni.cbinfo.com

For those lacking access to the Internet, you can request a CD-ROM subscription. Just email us at lakeside@cni.cbinfo.com for more information.



Our private section — information at your fingertips