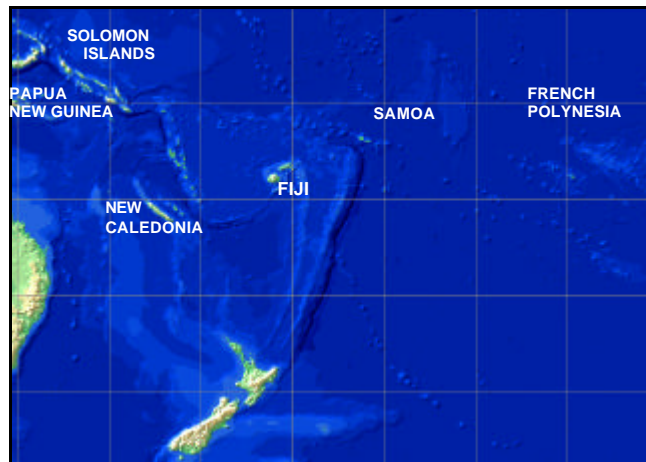
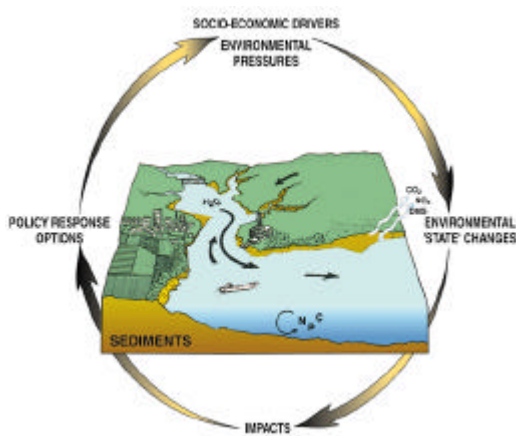
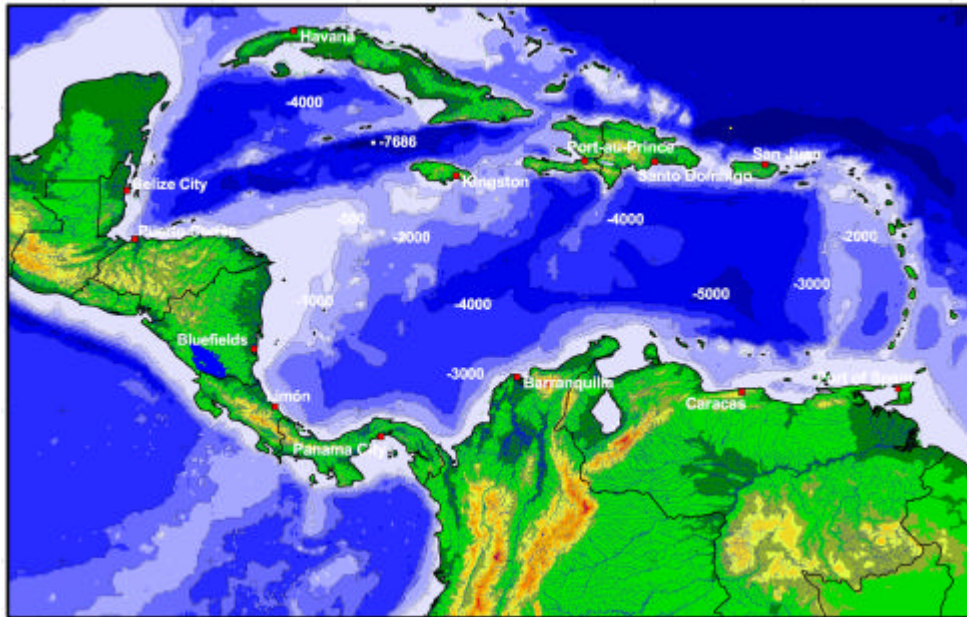


**LAND-OCEAN INTERACTIONS IN THE COASTAL ZONE (LOICZ)**  
 Core Project of the  
 International Geosphere-Biosphere Programme: A Study of Global Change (IGBP)



**Caribbean Basins**

**LOICZ Global Change Assessment and Synthesis of River Catchment/ Island–Coastal Sea Interaction and Human Dimensions; with a desktop study of Oceania Basins**

*Compiled and edited by B. Kjerfve, W.J. Wiebe, H.H. Kremer, W. Salomons and J.I. Marshall Crossland (Caribbean); N. Morcom, N. Harvey and J.I. Marshall Crossland (Oceania)*



## Caribbean Basins

### LOICZ Global Change Assessment and Synthesis of River Catchment/Island–Coastal Sea Interaction and Human Dimensions; with a desktop study of Oceania Basins

by

*B. Kjerfve\**, *W.J. Wiebe\*\**, *H.H. Kremer\*\*\**, *W. Salomons\*\*\*\** and *J.I. Marshall Crossland\*\*\** (Caribbean);  
*N. Morcom\*\*\*\*\**, *N. Harvey\*\*\*\*\** and *J.I. Marshall Crossland\*\*\** (Oceania)

*\*Marine Science Program, University of South Carolina*

*\*\*Department of Marine Science, University of Georgia*

*\*\*\*LOICZ International Project Office, Texel, The Netherlands*

*\*\*\*\*Free University, Amsterdam*

*\*\*\*\*\*Department of Geographical and Environmental Studies, University of Adelaide*



Published in the Netherlands, 2002 by:  
LOICZ International Project Office  
Netherlands Institute for Sea Research  
P.O. Box 59  
1790 AB Den Burg - Texel  
The Netherlands  
Email: loicz@nioz.nl

---

The Land-Ocean Interactions in the Coastal Zone Project is a Core Project of the “International Geosphere-Biosphere Programme: A Study Of Global Change” (IGBP), of the International Council of Scientific Unions.

The LOICZ IPO is financially supported through the Netherlands Organisation for Scientific Research by: the Ministry of Education, Culture and Science (OCenW); the Ministry of Transport, Public Works and Water Management (V&W RIKZ); and by The Royal Netherlands Academy of Sciences (KNAW), and The Netherlands Institute for Sea Research (NIOZ).

This report and allied workshops are contributions to the global LOICZ-Basins assessment and synthesis core project: The Biogeochemical and Human Dimensions of Land-Based Fluxes to the Coastal Zone.

---

**COPYRIGHT** © 2002, Land-Ocean Interactions in the Coastal Zone Core Project of the IGBP.

Reproduction of this publication for educational or other, non-commercial purposes is authorised without prior permission from the copyright holder.

Reproduction for resale or other purposes is prohibited without the prior, written permission of the copyright holder.

**Citation:** Kjerfve, B., W.J. Wiebe, H.H. Kremer, W. Salomons and J.I. Marshall Crossland (*Caribbean*); N. Morcom, N. Harvey and J.I. Marshall Crossland (*Oceania*); 2002. Caribbean Basins: LOICZ Global Change Assessment and Synthesis of River Catchment/Island–Coastal Sea Interaction and Human Dimensions; with a desktop study of Oceania Basins. LOICZ Reports & Studies No. 27, ii+174 pages, LOICZ, Texel, The Netherlands.

**ISSN:** 1383-4304

**Cover:** The cover shows images of the Caribbean (B. Kjerfve) and Oceania (Rand McNally) and the DPSIR framework cycle (from Turner *et al.* 1998).

**Disclaimer:** *The designations employed and the presentation of the material contained in this report do not imply the expression of any opinion whatsoever on the part of LOICZ, the IGBP or the Intergovernmental Oceanographic Commission, concerning the legal status of any state, territory, city or area, or concerning the delimitations of their frontiers or boundaries. This report contains the views expressed by the authors and may not necessarily reflect the views of the IGBP or UNESCO.*

---

The LOICZ Reports and Studies series is published by LOICZ and distributed free of charge to scientists involved in global change research in coastal areas.