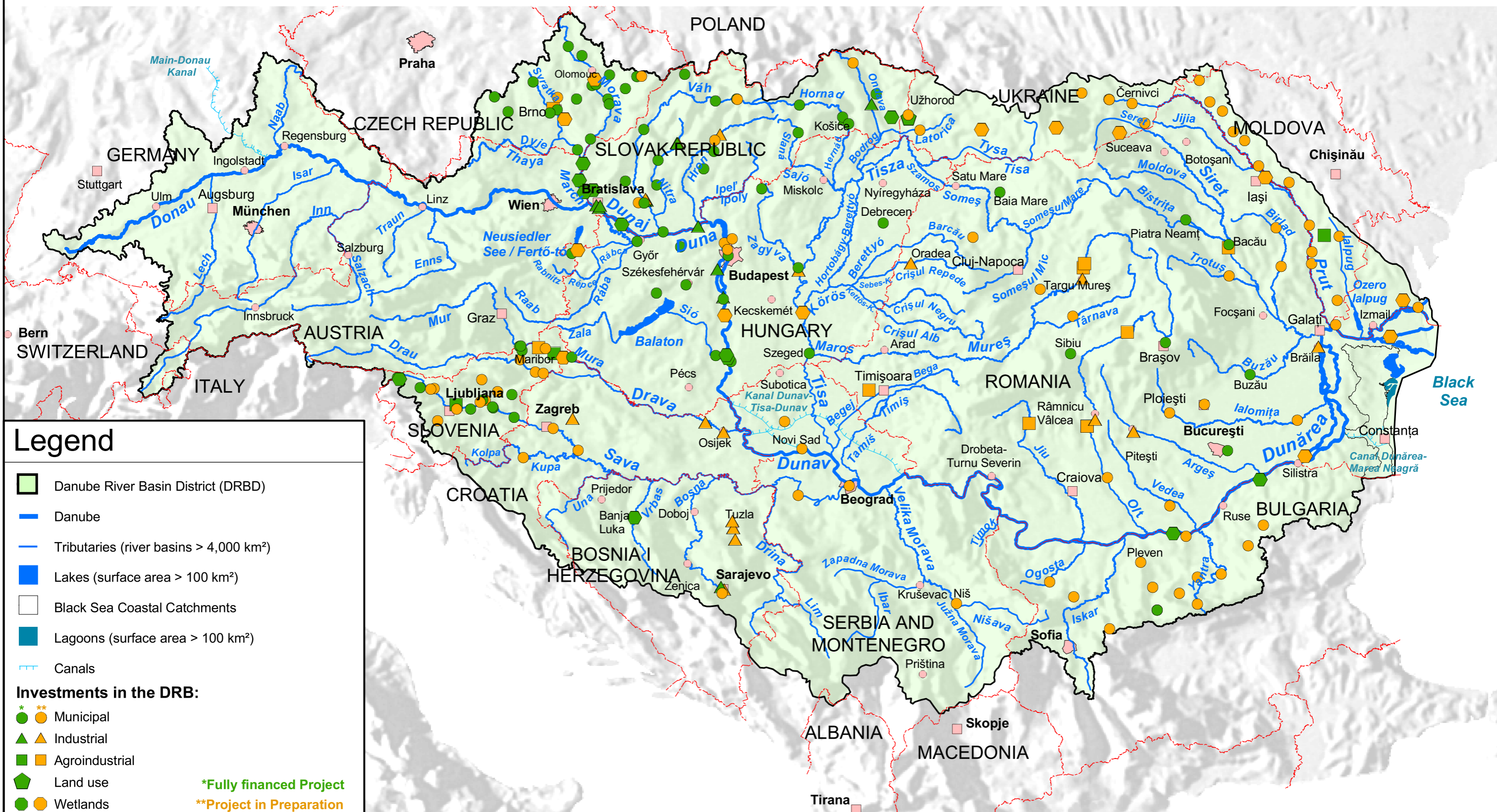


Investment Projects in Response to the ICPDR Joint Action Programme

DABLAS projects 2004



Legend

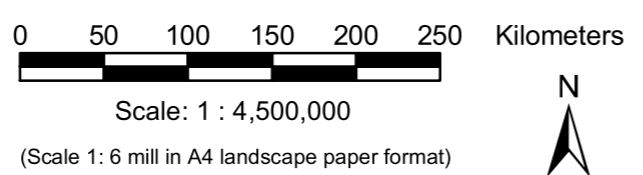
- Danube River Basin District (DRBD)
- Danube
- Tributaries (river basins > 4,000 km²)
- Lakes (surface area > 100 km²)
- Black Sea Coastal Catchments
- Lagoons (surface area > 100 km²)
- Canals

Investments in the DRB:

- Municipal
- Industrial
- Agroindustrial
- Land use
- Wetlands

*Fully financed Project
**Project in Preparation

- National borders
- Cities:
> 1,000,000 inhabitants
- 250,000 - 1,000,000 inhabitants
- 100,000 - 250,000 inhabitants



This product includes geographical data licensed from European National Mapping Agencies. EuroGlobalMap v1.0 was used as the basic topographic layer for DE, AT, CZ, IT, SI and HR. The data for the other countries is based on VMAP Level 0 data from NIMA. The outer border of the DRBD is based on national information from DE, AT, CH, CZ, SK, SI, HR, BA, CS, BG, RO, UA and MD. For PL, AL, MK and IT the data of the European Commission, Joint Research Centre was used.

Prepared by FLUVIUS, Vienna, November 2004 (draft 1)