

HELSINKI COMMISSION

Baltic Marine Environment

Protection Commission



HELCOM Report on Illegal Discharges Observed During Aerial Surveillance in 2004

Annual HELCOM aerial surveillance data 2004

Country	No. of flight hours		No. of detections		Detections confirmed/ observed as oil spills		Estimated volume m ³	No. of polluters Rigs	Ships	Unknown	Remarks[1]
	Daylight	Darkness	Daylight	Darkness	Daylight	Darkness					
Poland	239.4		10		10		0.6			10	
Latvia	365.02		13		13		0.99			13	All observations made visually
Finland	502	142	32	4	32	4	22.8		2	32	2 polluters identified (ships in harbours)
Denmark	207	58	33	7	30	NIL	522	NIL	6	24	
Lithuania	100										
Estonia	198.16		19		19		81		1	18	Estimated max. volume given
Sweden	2669	562	131	12	131	12	106.1		see remark		Totally 67 investigations in progress (not all from aerial surveillance)
Germany	391.16	100.416	37	5	37	5	140.7	0	0	27	5 of the included pollutions have been observed in Swedish Waters and 10 pollutions in Danish Waters
Total	4671.74	862.416	275	28	272	21	874.411	0			

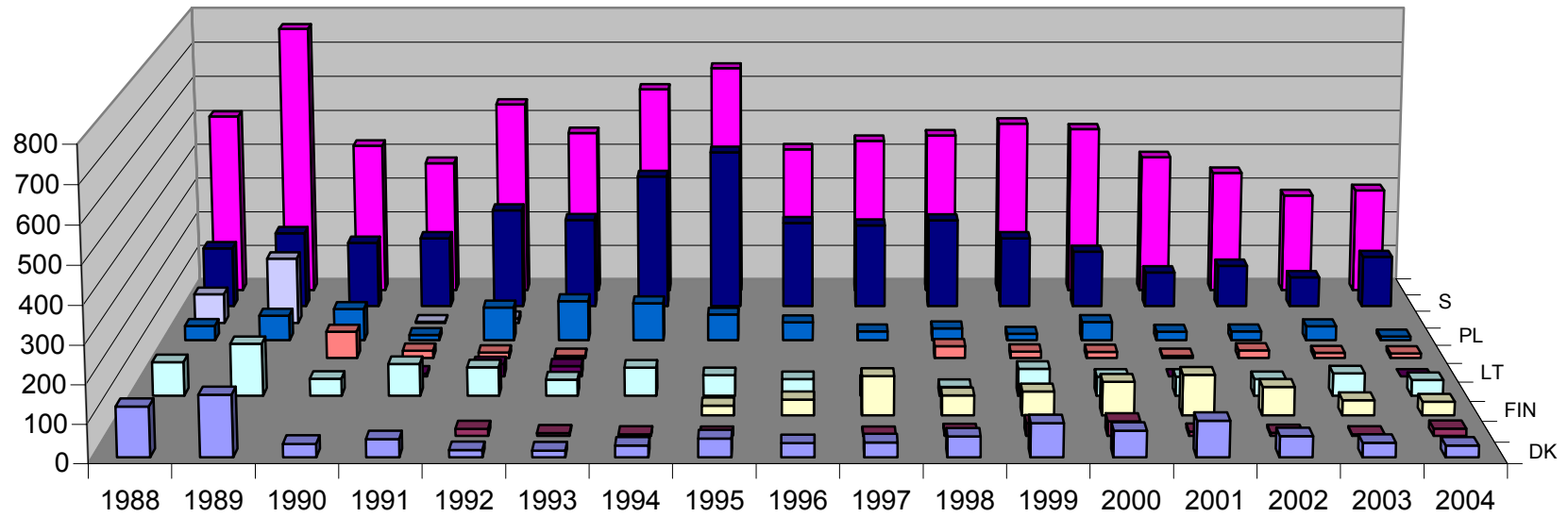
Spills in 2004 by size

Size	Poland	Latvia	Finland	Denmark	Lithuania	Estonia	Sweden	Germany	Total
< 1m ³	10	13	30	21	0	16	130	24	244
1-10 m ³	0	0	2	3	0	3	12	2	22
10-100 m ³	0	0	1	5	0		1	1	8
> 100 m ³	0	0	0	1	0			1	2
unknown			3					14	17
Total	10	13	36	30	0	19	143	42	293

Satellite

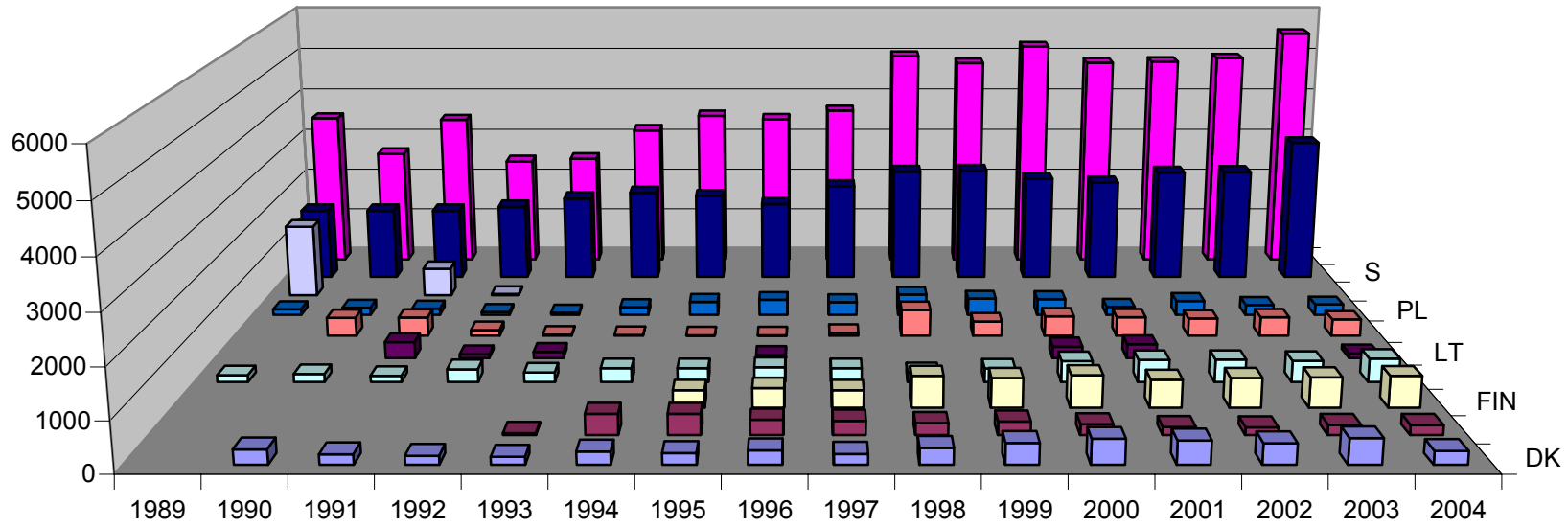
Country	Satellite detections	Confirmed oil	Remarks	
Poland	0	0		
Latvia	0	0		
Finland	8	1	OCEANIDES project	in Finnish EEZ
Finland	3		OCEANIDES project	in Russian EEZ
Finland	20	2 confirmed during CEPCON 2004	OCEANIDES project	in Estonian EEZ
Finland	2		OCEANIDES project	in Swedish EEZ
Denmark	132	11		in both HELCOM and OSPAR areas
Lithuania	0	0		
Sweden	97	14		
Germany	2	0		
Germany	19			in DK area
Germany	9			in SE area
Total	292	28		

confirmed pollutions



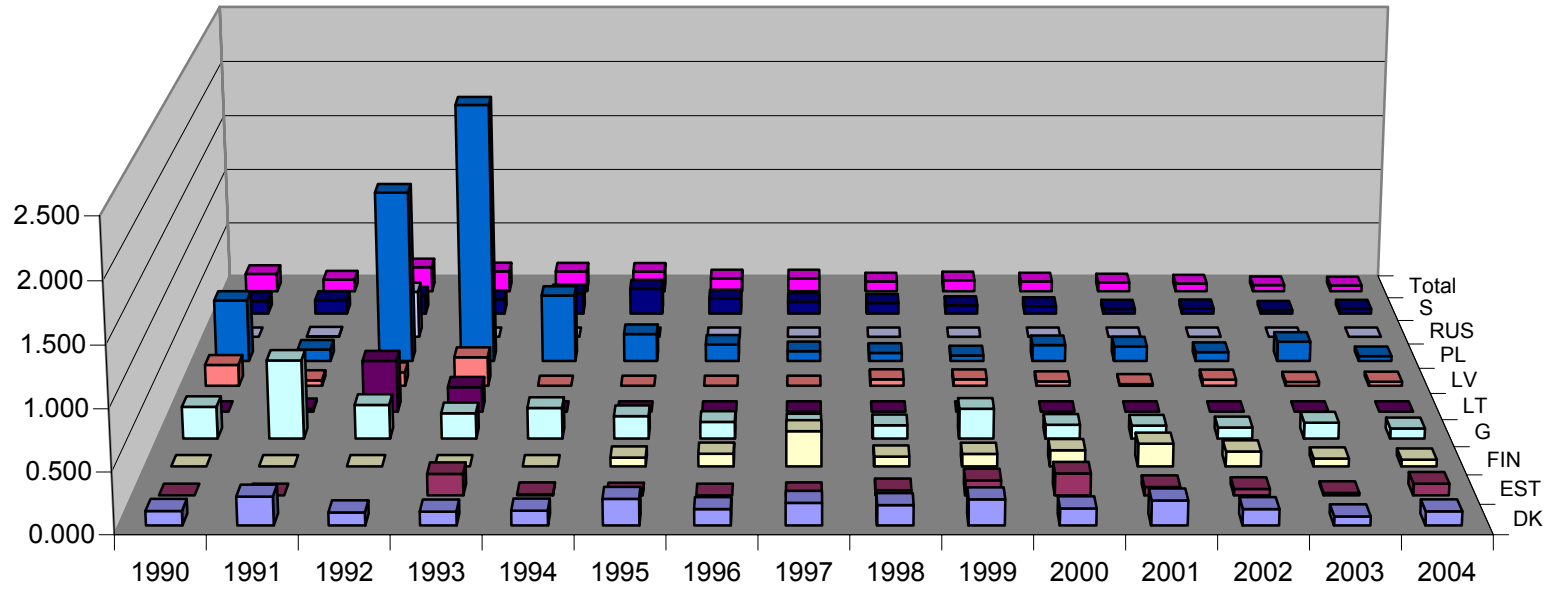
	1988	1989	1990	1991	1992	1993	1994	1995	1996	1997	1998	1999	2000	2001	2002	2003	2004
DK	129	159	34	46	18	17	30	48	36	38	53	87	68	93	54	37	30
EST					18	7	4	3		3	10	33	38	11	8	4	19
FIN								26	42	104	53	63	89	107	75	40	36
G	90	139	45	85	76	43	75	55	44	34	23	72	51	51	44	60	42
LT				8	34	28								0			0
LV			73	20	15	6					33	18	17	6	21	14	13
PL	40	69	88	14	92	110	104	72	50	25	33	18	51	24	25	39	10
RUS	82	184		3	13												
S	168	212	184	197	278	250	375	445	241	234	249	197	158	98	117	84	143
Total	509	763	424	373	544	461	588	649	413	438	454	488	472	390	344	278	293

flight time (hours)



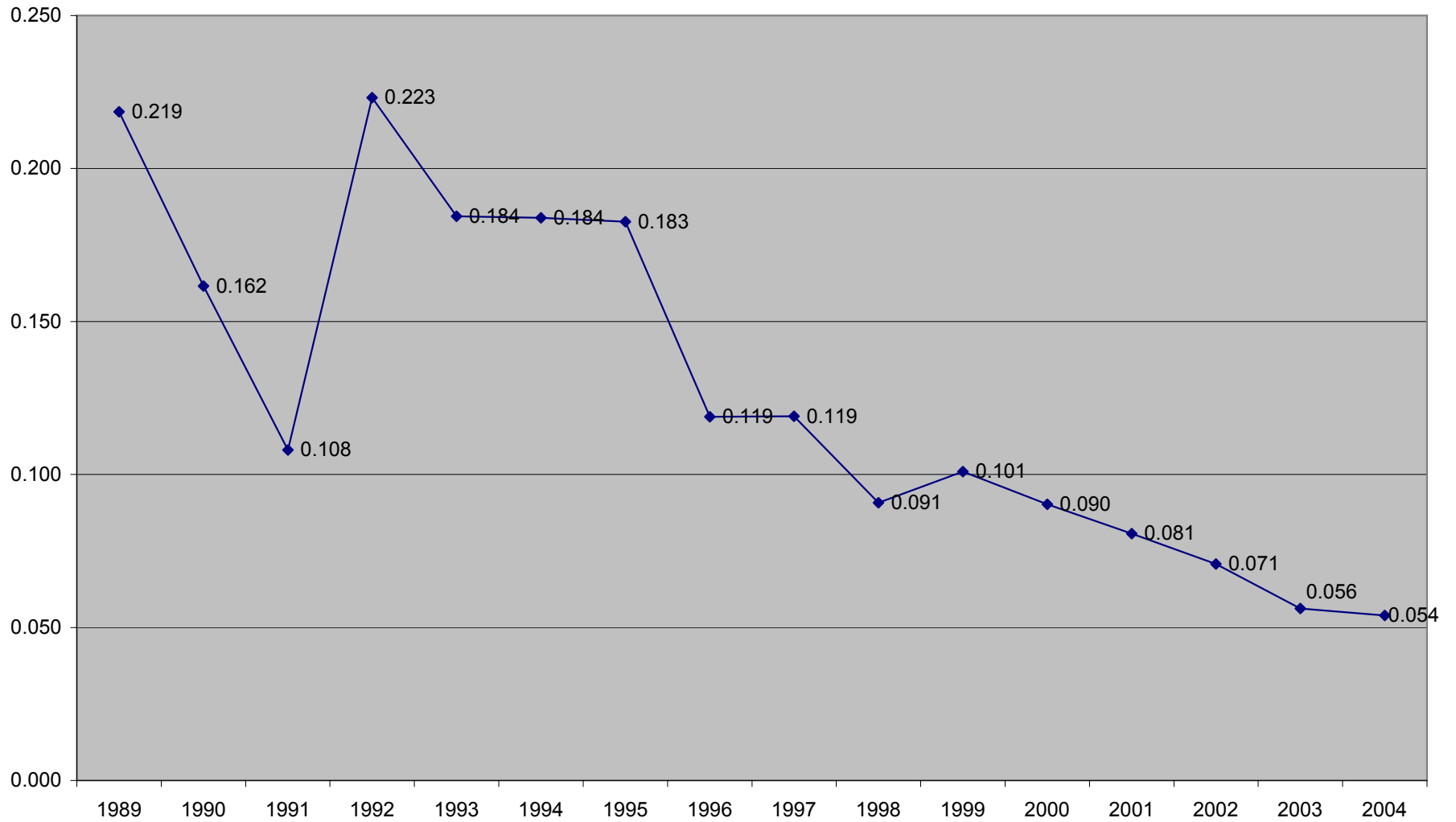
	1989	1990	1991	1992	1993	1994	1995	1996	1997	1998	1999	2000	2001	2002	2003	2004
DK		292	199	172	153	253	225	275	209	325	416	497	463	412	510	265
EST					40	420	420	305	284	236	268	212	161	153	201	198.16
FIN							355	400	355	649	603	660	567	605	615	644
G	142	168	129	267	201	290	291	313	288	206	286	439	466	469	446	491.43
LT			348	78	133			65				250	300			100
LV		400	408	127	24	18	8	8	64	577	320	436	412	387	414	365.02
PL	131	164	140	62	49	179	301	345	291	465	375	362	187	320	228	239.4
RUS	1618		629	32												
S	1600	1600	1600	1700	1900	2038	1953	1763	2189	2544	2565	2374	2281	2518	2532	3231
Total	3491	2624	3453	2438	2500	3198	3553	3474	3680	5002	4833	5230	4837	4864	4946	5534

PF index



	1990	1991	1992	1993	1994	1995	1996	1997	1998	1999	2000	2001	2002	2003	2004
DK	0.116	0.231	0.105	0.111	0.119	0.213	0.131	0.182	0.163	0.209	0.137	0.201	0.131	0.073	0.113
EST	0.000	0.000		0.175	0.010	0.007	0.000	0.011	0.042	0.123	0.179	0.068	0.052	0.020	0.096
FIN	0.000	0.000	0.000	0.000	0.000	0.073	0.105	0.293	0.082	0.104	0.135	0.189	0.124	0.065	0.056
G	0.268	0.659	0.285	0.214	0.259	0.189	0.141	0.118	0.112	0.252	0.116	0.109	0.094	0.135	0.085
LT	0.000	0.023	0.436	0.211	0.000	0.000	0.000	0.000	0.000	0.000	0.000	0.000	0.000	0.000	0.000
LV	0.183	0.049	0.118	0.250	0.000	0.000	0.000	0.000	0.057	0.056	0.039	0.015	0.054	0.034	0.036
PL	0.537	0.100	1.484	2.245	0.581	0.239	0.145	0.086	0.071	0.048	0.141	0.128	0.078	0.171	0.042
RUS	0.000	0.005	0.406	0.000	0.000	0.000	0.000	0.000	0.000	0.000	0.000	0.000	0.000	0.000	0.000
S	0.115	0.123	0.164	0.132	0.184	0.228	0.137	0.107	0.098	0.077	0.067	0.043	0.046	0.033	0.044
Total	0.162	0.108	0.223	0.184	0.184	0.183	0.119	0.119	0.091	0.101	0.090	0.081	0.071	0.056	0.053

Number of confirmed pollutions detected in HELCOM area



Illegal oil discharges observed during aerial surveillance in 2004

