

THE SEA BELONGS TO  
EVERYONE  
ALSO TO YOU



# EfficienSea

- Efficient, Safe and Sustainable  
Traffic at Sea

Henry Schuren  
EfficienSea Project Manager, M.Sc.  
[www.EfficienSea.org](http://www.EfficienSea.org)

Danish Maritime Safety Administration  
[www.frv.dk](http://www.frv.dk)

3 March 2010  
at the HELCOM stakeholder conference in Helsinki



## The EfficienSea project

Part financed by EU *Baltic Sea Region Programme 2007-2013*

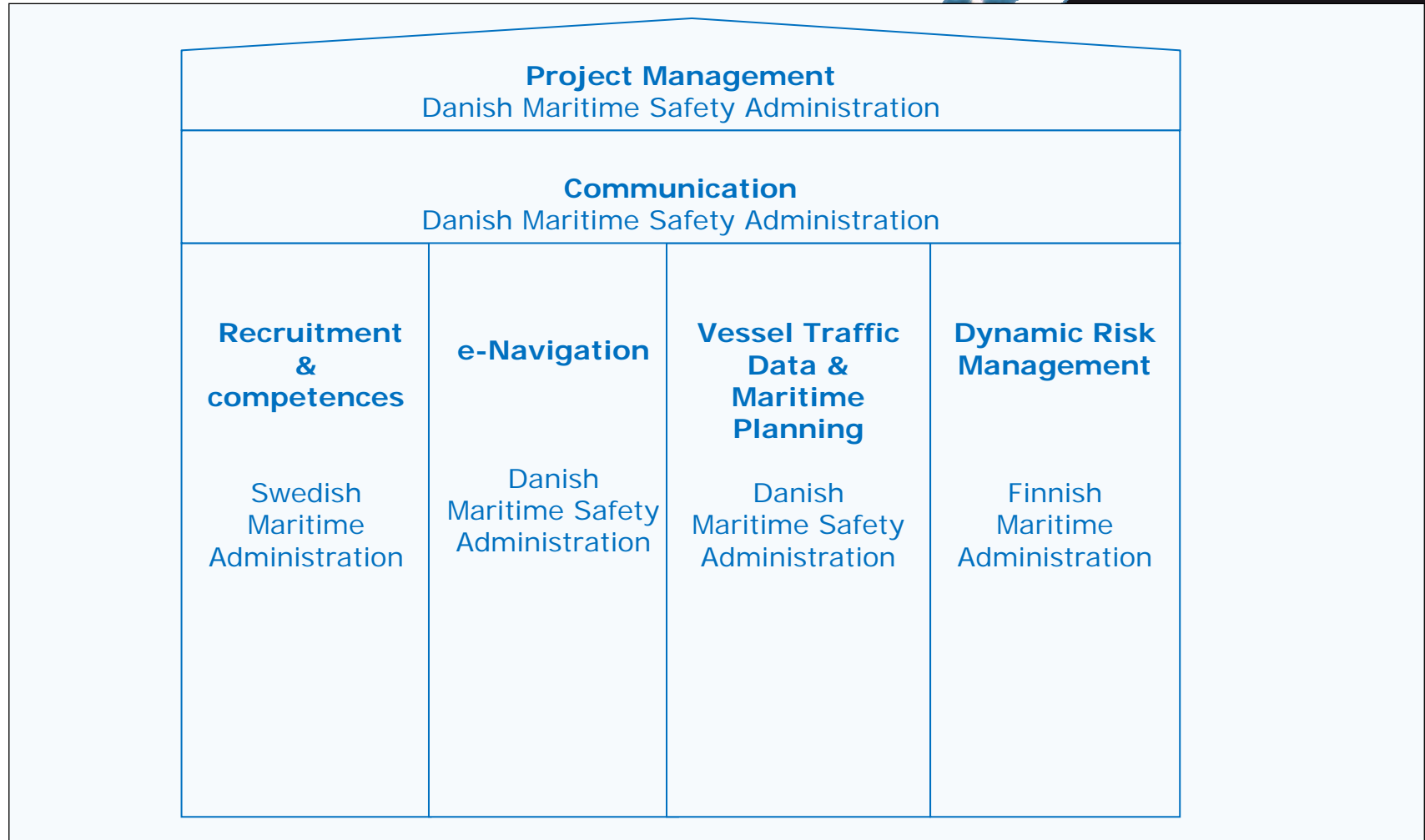
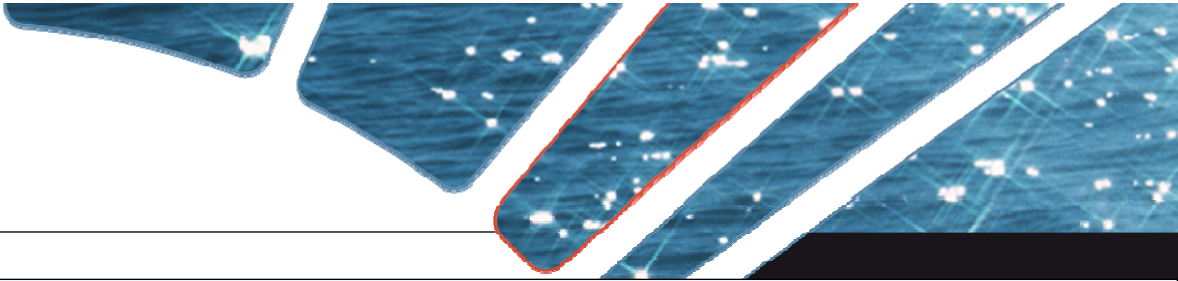
8 million € budget

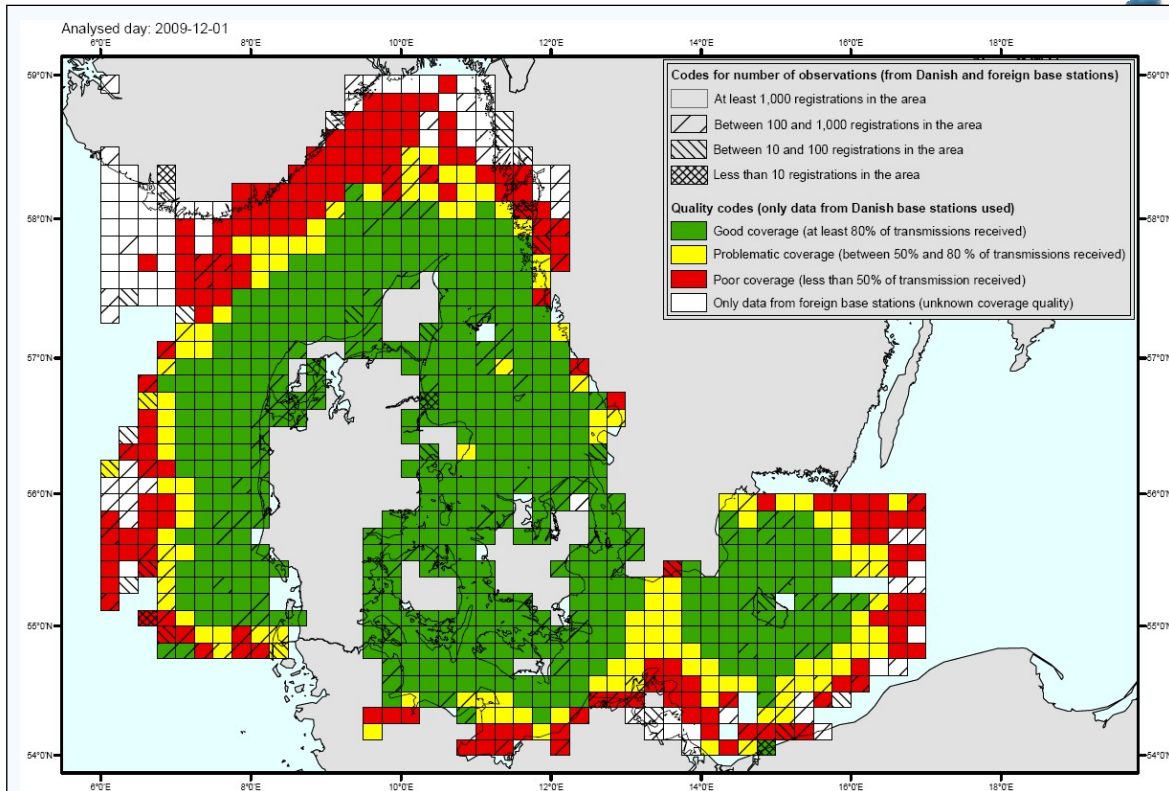
Strategic and Flagship project in the Baltic Sea Strategy

16 partners from Denmark, Sweden, Norway, Finland, Poland and Estonia

Lead partner: Danish Maritime Safety Administration

Time frame: 2009-2012 with extension possibility





## A – Advanced modelling

### AIS Coverage Analysis

Based on linear interpolation analysis of class A data omitting ships with speeds less than 4 knots.

## B - Baltic Sea

### Colour Explanation

1-1 ships	17.2%
2-2 ships	11.3%
3-4 ships	15.6%
5-6 ships	10.0%
7-9 ships	9.5%
10-13 ships	8.0%
14-20 ships	7.6%
21-33 ships	7.3%
34-69 ships	6.9%
70-1022 ships	6.7%



## C – Challenge



D - Dreams



## E – e-Navigation

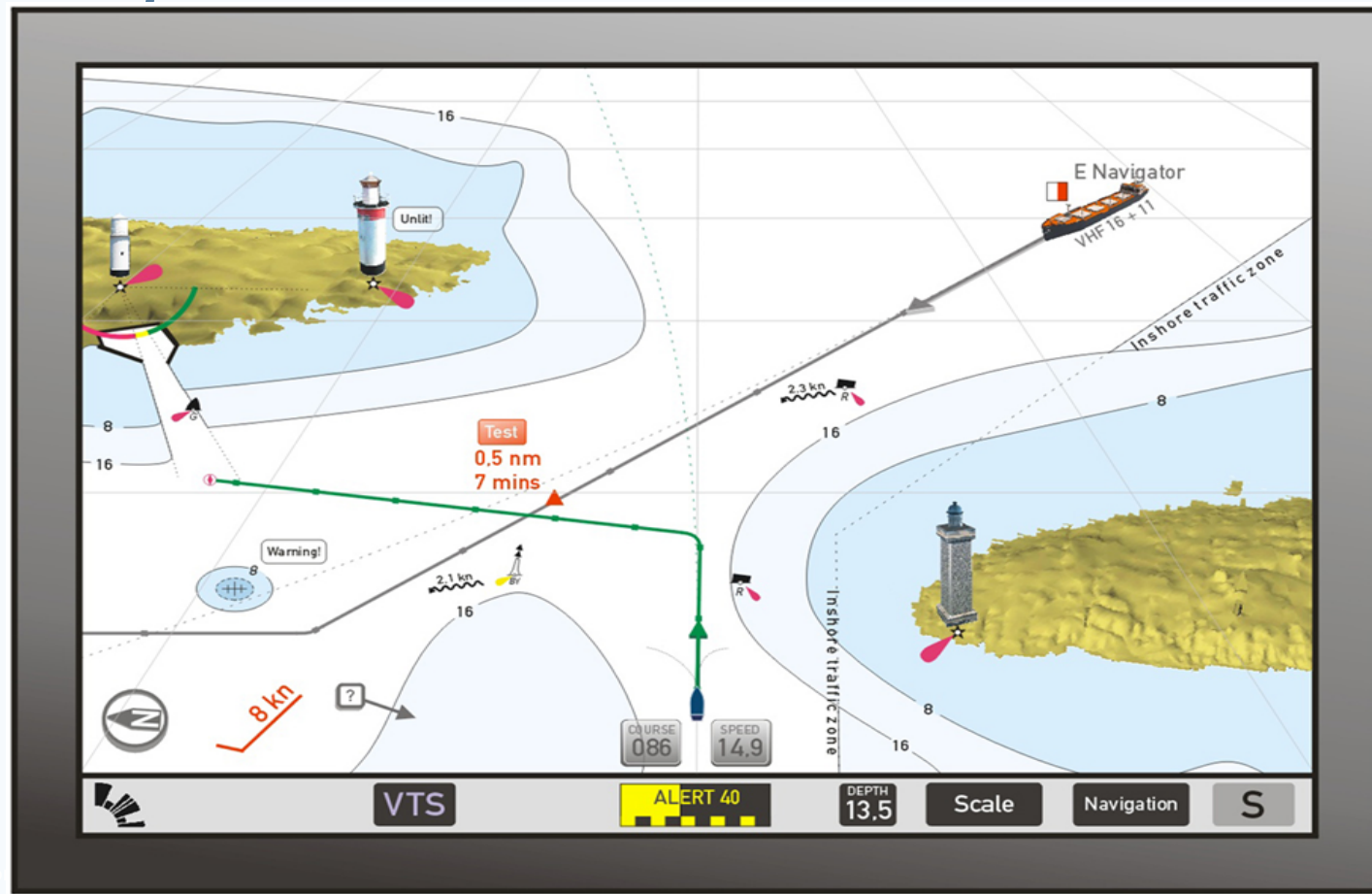
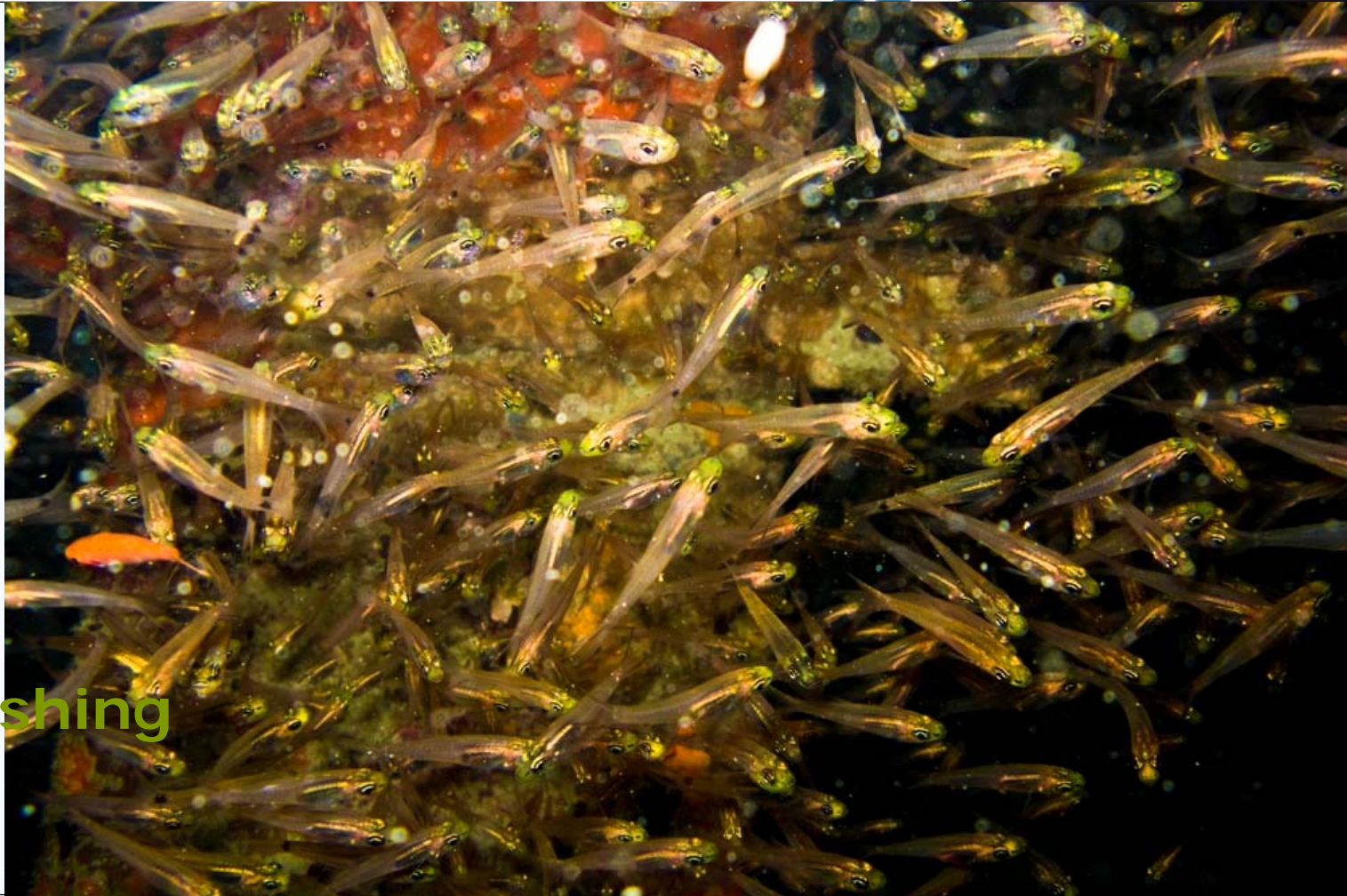
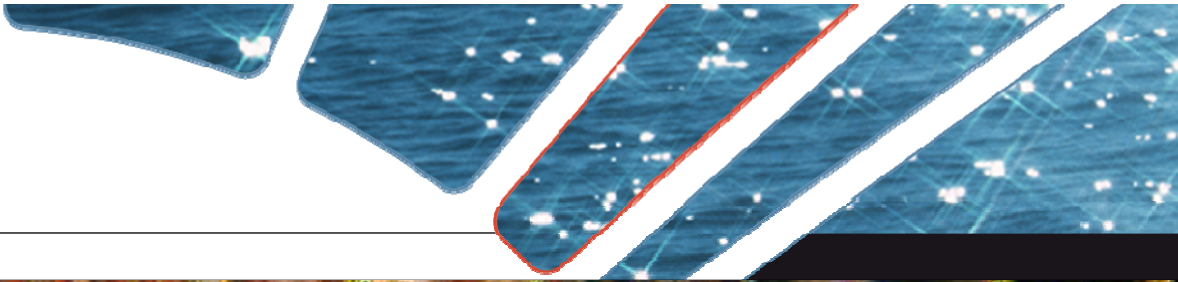
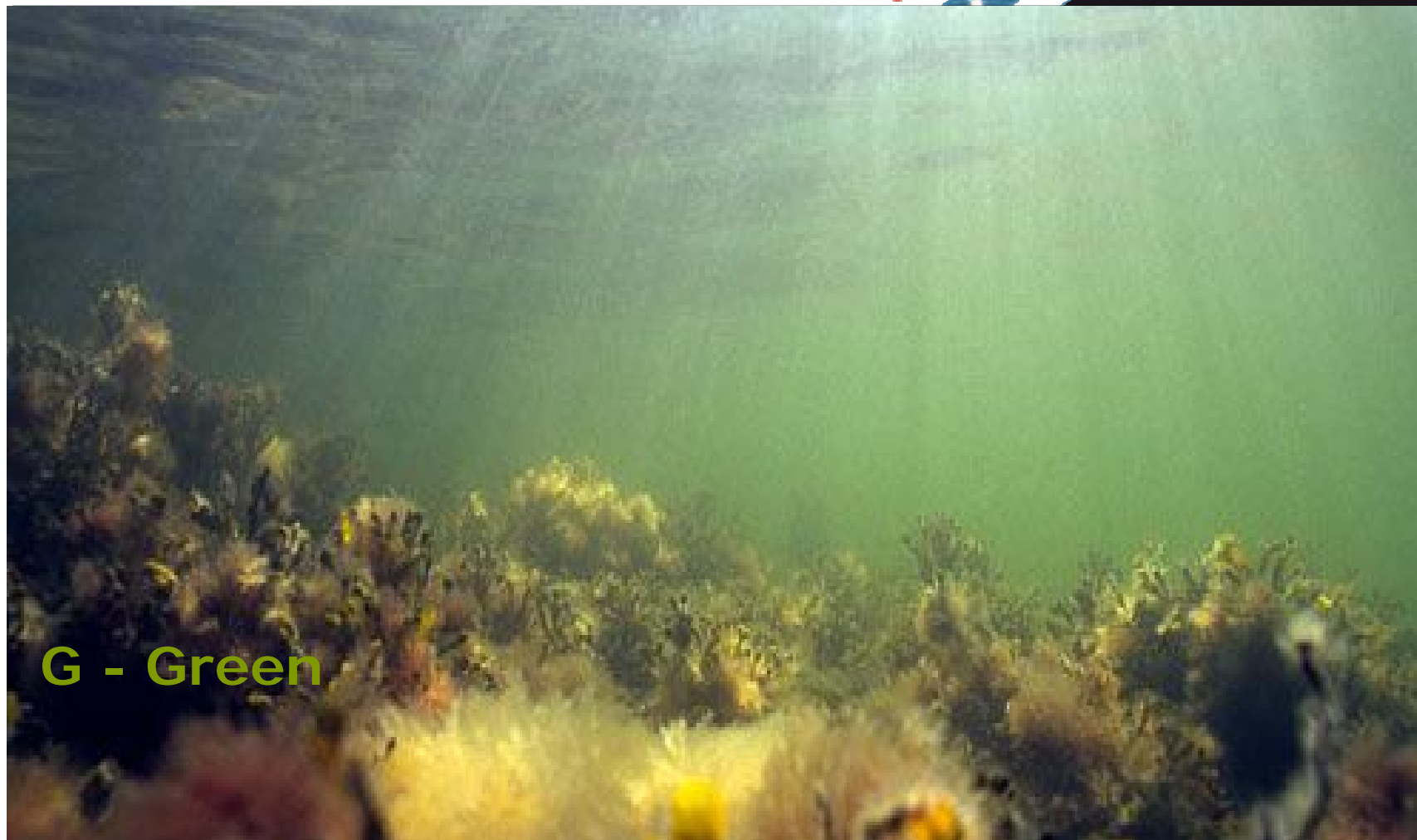


Photo: Tarje Rakkoff



## F - Fishing

Photo: Teije P.



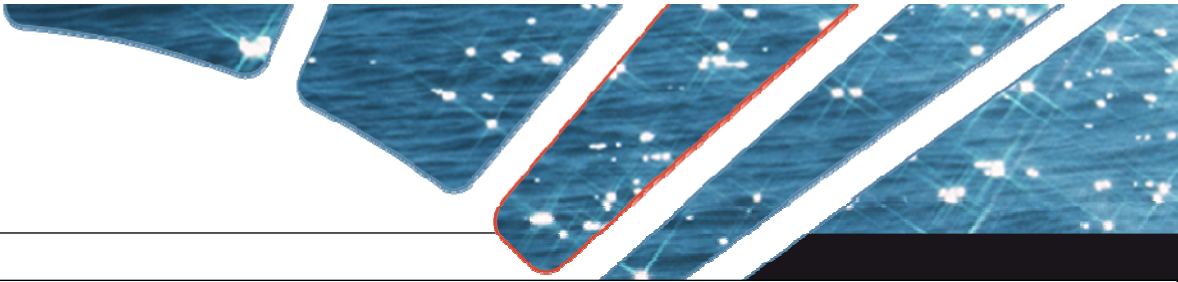


Photo: Tarje Rakke/brijans.se

## I – Intelligent information

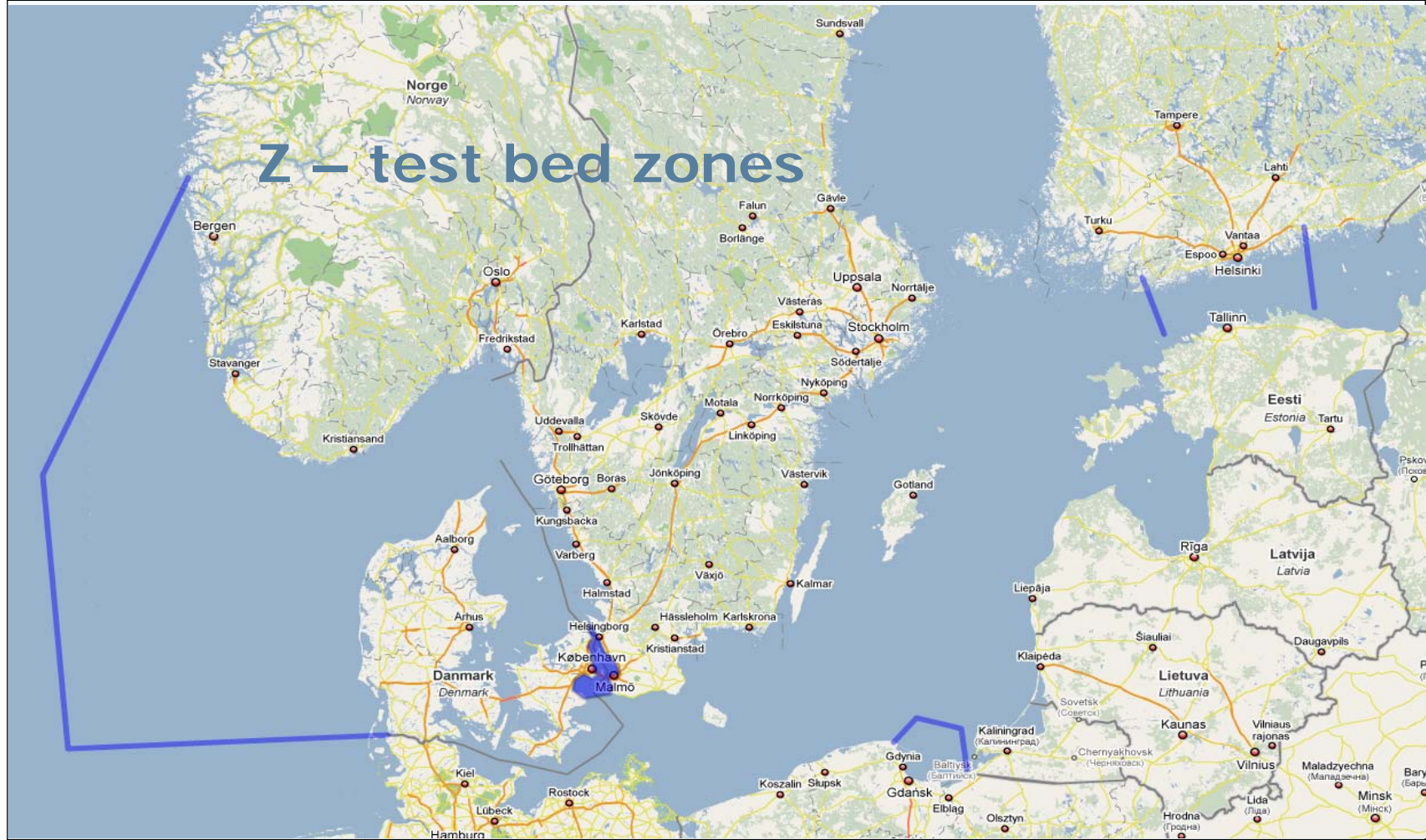
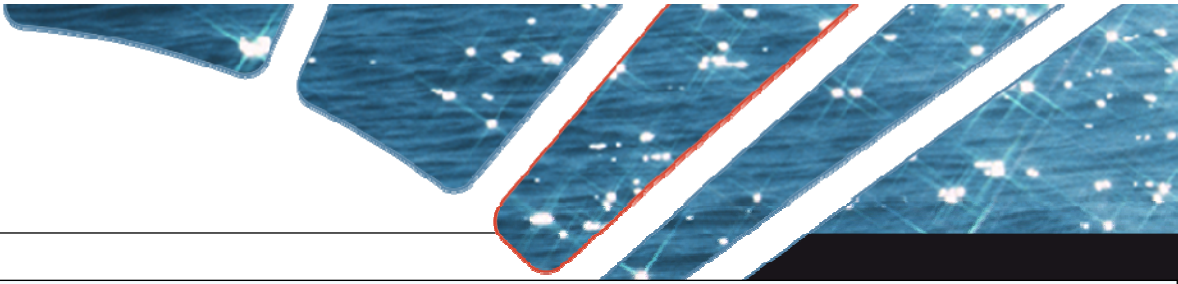




## S – Sustainability



02.08.2009 12:26:08 (+0,0 hrs) Dir=80 Lat=N58 57' 54,67" Lon=E009 42' 34,06" Alt=305ft MSL WGS 1984



## W – World wide impact

Photo: Terje Rakke/brijans.se



Thank you!

[www.ufficiensea.org](http://www.ufficiensea.org)