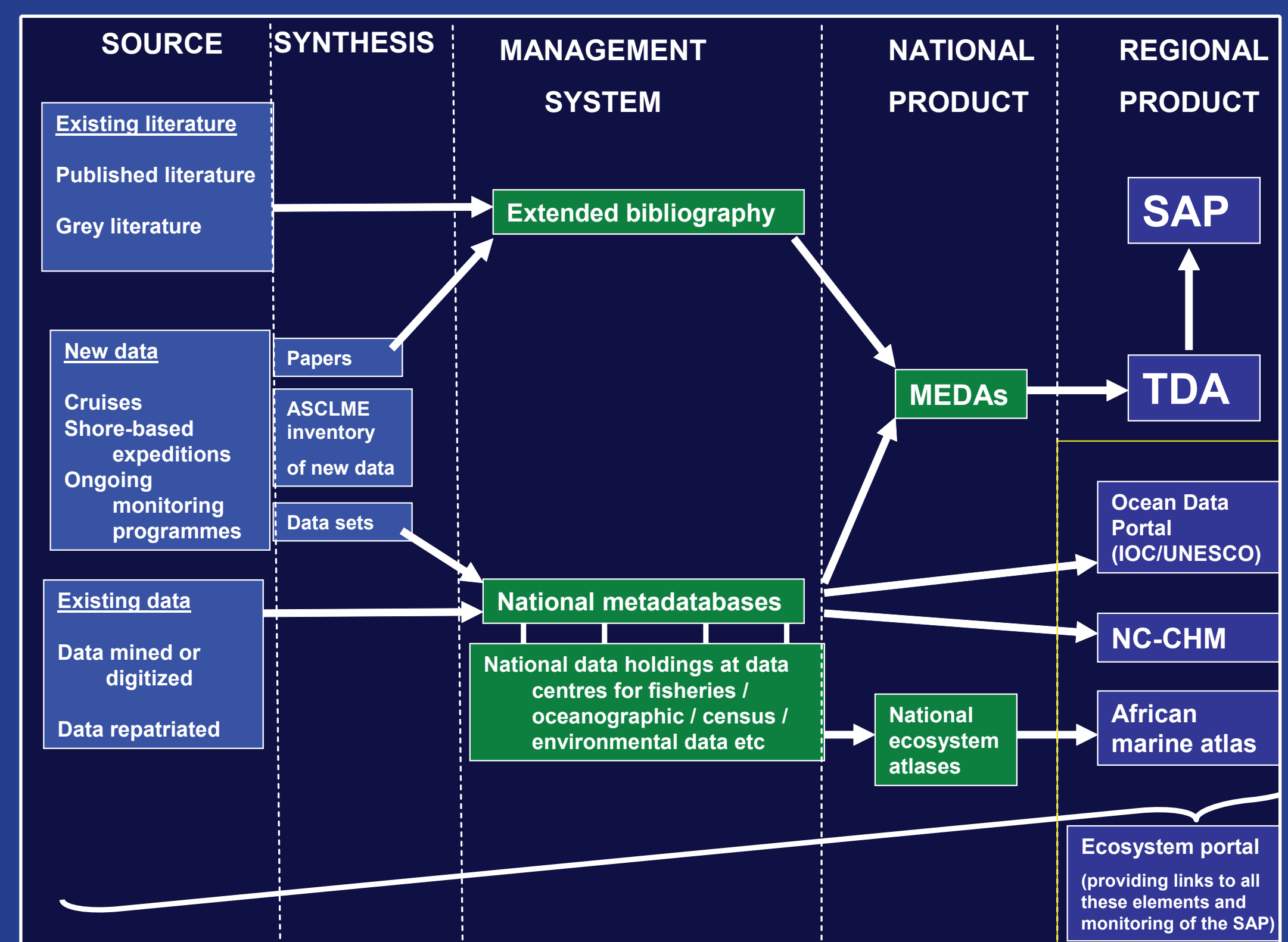


The Marine Ecosystem Diagnostic Analysis and Data and Information Management for the ASCLME Project

Scott, L.E.P.¹, Anasse, F.², Etienne, M.³, Hermes, J.⁴, Masalu, D.⁵, Maueua, C.⁶, Ong'anda, H.⁷, Rakotoarijaona, J.R.⁸, Sabriye, A.⁹, and Virasami, R.¹⁰



In the process of supporting participating countries working together to develop Transboundary Diagnostic Analyses (TDAs) and Strategic Action Programmes (SAPs), the ASCLME Project is starting with a national activity for each of the countries to develop a comprehensive Marine Ecosystem Diagnostic Analysis (MEDA). This will be an integrated resource combining up-to-date, comprehensive state-of-the-environment information together with a causal chain analysis, diagnostic of coastal livelihoods, cost-benefit analysis of possible interventions and a monitoring and indicator assessment programme.



Management of Data and Information by Countries as part of the ASCLME Project

Once complete, the MEDAs will form the factual basis of each country's contribution to the regional TDAs. MEDAs will capture essential information related to the dynamic biophysical processes that define the LMEs, and identify areas of concern that will feed into the TDAs, and the SAPs. As such they are fundamentally important to the success of the ASCLME Project. The parallel UNEP (WIO-LaB) and World Bank (SWIOFP) Projects, as well as other partner projects (eg the EAF-Nansen Project) and institutions (eg the IRD and COI) will also feed pertinent information into the process, and assist in identifying policy, legal and institutional interventions and investments required to address transboundary priorities.



Whilst the TDA/SAP process is very effective at the regional level, each MEDA will result in a nationally relevant publication and information resource for management of the marine ecosystem by each country. It will add a new dimension to the management of LMEs by better understanding the overall state of the environment within each country.



TABLE OF CONTENTS OF THE MARINE ECOSYSTEM DIAGNOSTIC ANALYSIS

Preamble
Section A: Executive summary
Section B: Current status

I. COUNTRY OVERVIEW

2. BIOPHYSICAL ENVIRONMENT

- 2.1 Description of the coast and distinctive features
- 2.2 General description of the climate
- 2.3 Marine and coastal geology and geomorphology
- 2.4 Freshwater resources and drainage, including rivers, estuaries, deltas and coastal lakes
- 2.5 Physical Oceanography
 - 2.5.1 Currents (Coastal hydrodynamics and offshore current systems)
 - 2.5.2 Tidal regime and waves
 - 2.5.3 Sea level change
 - 2.5.4 Ocean temperature
 - 2.5.5 Salinity patterns
 - 2.5.6 Ocean-atmosphere interaction
- 2.6 Chemical and Biological Oceanography
 - 2.6.1 Nutrients
 - 2.6.2 Persistent organic / inorganic pollutants
 - 2.6.3 Primary production
 - 2.6.4 Secondary production
- 2.7 Coastal zone and continental shelf
 - 2.7.1 Description and extent of coastal and marine habitats
 - 2.7.2 Productivity of the coastal zone (corals, mangroves, seagrass beds)
- 2.8 Microfauna and meiofauna
- 2.9 Macrofauna (state of biological knowledge)
 - 2.9.1 Invertebrates
 - 2.9.2 Fish and fish resources
 - 2.9.3 Mammals
 - 2.9.4 Reptiles
 - 2.9.5 Birds
 - 2.9.6 Exotics and invasive species
- 2.10 Long term predicted atmospheric changes

3. HUMAN ENVIRONMENT

- 3.1 Coastal and island populations – current status and trends
- 3.2 Sites of religious or cultural significance
- 3.3 Human health
- 3.4 Infrastructure

4. ECONOMY AND COASTAL LIVELIHOODS

- 4.1 General description
- 4.2 Tourism
- 4.3 Ports and marine transport
- 4.4 Manufacturing (boat building - here or under fisheries)
- 4.5 Mineral extraction (including oil and gas)
- 4.6 Aquaculture, agriculture and forestry
- 4.7 Fisheries (ornamental, artisanal, subsistence) and associated activities

5. POLICY AND GOVERNANCE

- 5.1 Administrative regions on land (coastal districts, municipalities)
- 5.2 Administrative/legislative zones of the sea
- 5.3 Legislation
- 5.4 Continental shelf extents
- 5.5 National, provincial and local authorities in coastal/marine affairs
- 5.6 NGOs / private sector
- 5.7 International relations, conventions and committees

6. PLANNING AND MANAGEMENT

- 6.1 National disaster management plans
- 6.2 Environmental sensitivity mapping
- 6.3 Coastal management / development plans
- 6.4 Areas under special management
- 6.5 Monitoring, Control, Surveillance

7. REFERENCES

Section C: Causal chain analysis for Areas of Concern (Issues)
Section D: Cost benefit analysis
Section E: Monitoring and Indicator assessment programme
Section F: Policy briefing document

MEDA ANNEXES



1- Agulhas and Somali Current Large Marine Ecosystems (ASCLME) Project, 2- Ministry of Agriculture, Fisheries and the Environment (Comoros), 3- Ministry of Environment, Natural Resources and Transport (Seychelles), 4- South African Environmental Observation Network (South Africa), 5- Institute of Marine Sciences, University of Dar es Salaam (Tanzania), 6- INAHINA (Mozambique), 7- Kenya Marine and Fisheries Research Institute (Kenya), 8- Ministry of Environment (Madagascar), 9- Ministry of Fisheries and Marine Resources (Somalia), 10- Meteorological Services (Mauritius).

Layout by James Stapley